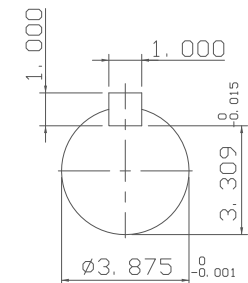
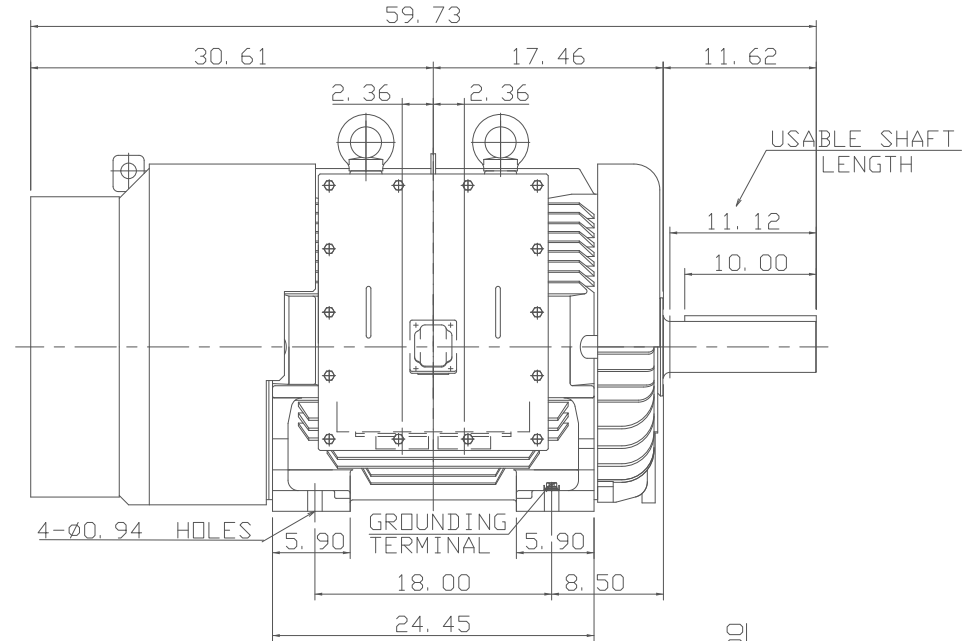
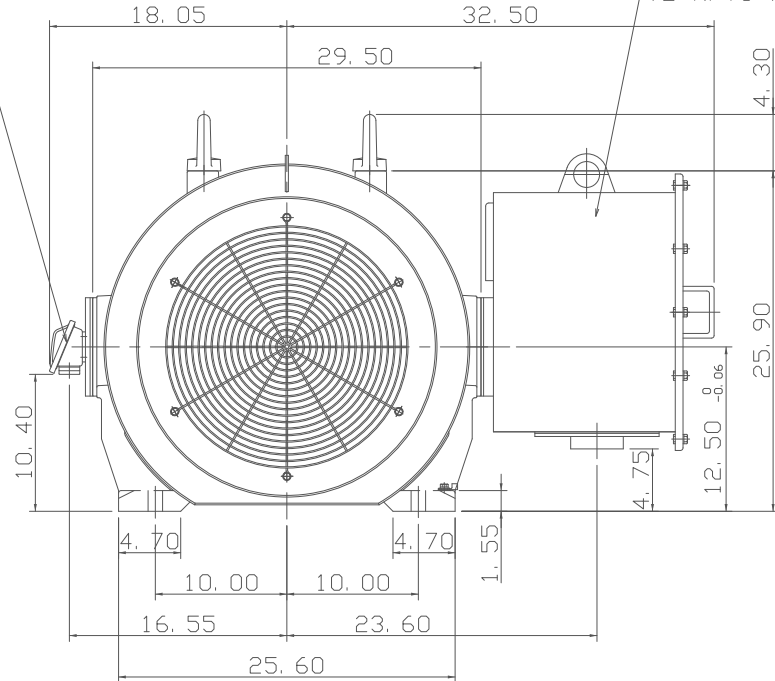


TYPE	OUTPUT		POLE	TIME RATING	VOLTAGE V	Hz	SYN. SPEED R. P. M
	HP.	kW.					
AEHH-GD	250	186.5	4	CONT.	460	60	1800

TOTALLY ENCLOSED FAN-COOLED TYPE, SQUIRREL-CAGE ROTOR

THERMISTOR T-BOX (NPT0.75")

PRIMARY T-BOX (2~NPT3")



SHAFT END (ENLARGED VIEW)

NOTE:

1. DIMENSIONS IN inch
2. FRAME NO.505UZ
3. F CLASS INSULATION, S. F. 1. 15
4. FOR BELT DRIVE
5. ENCLOSURE: IP55
6. BEARING SIZE: DRIVE-END NU324C3  
OPP. DRIVE-END 6320
7. NON-SPARKING FAN
8. WITH THERMISTOR: PTC 140°C 3PCS
9. MOTOR APPROX. WEIGHT: 2910lb

DATE  
FEB. 01, 2018

CATALOG NO.:  
CDP2504RZ

OUTLINE DIMENSIONS  
3-PHASE INDUCTION MOTOR

DWN.	C. HSIEH	MAR·29·2017
CHKD.	H. HUANG	MAR·29·2017
APPD.	C. LIU	MAR·29·2017

TEC Westinghouse

DWG NO. REV: 01

4B040T900 1/1