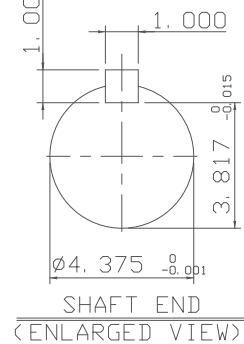
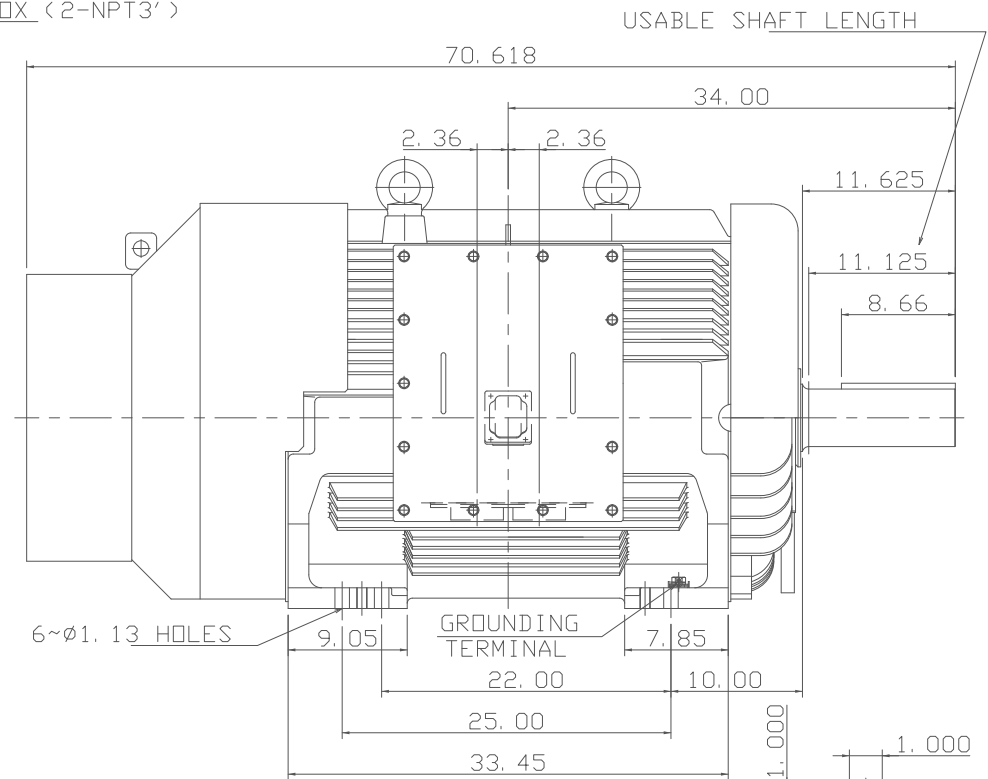
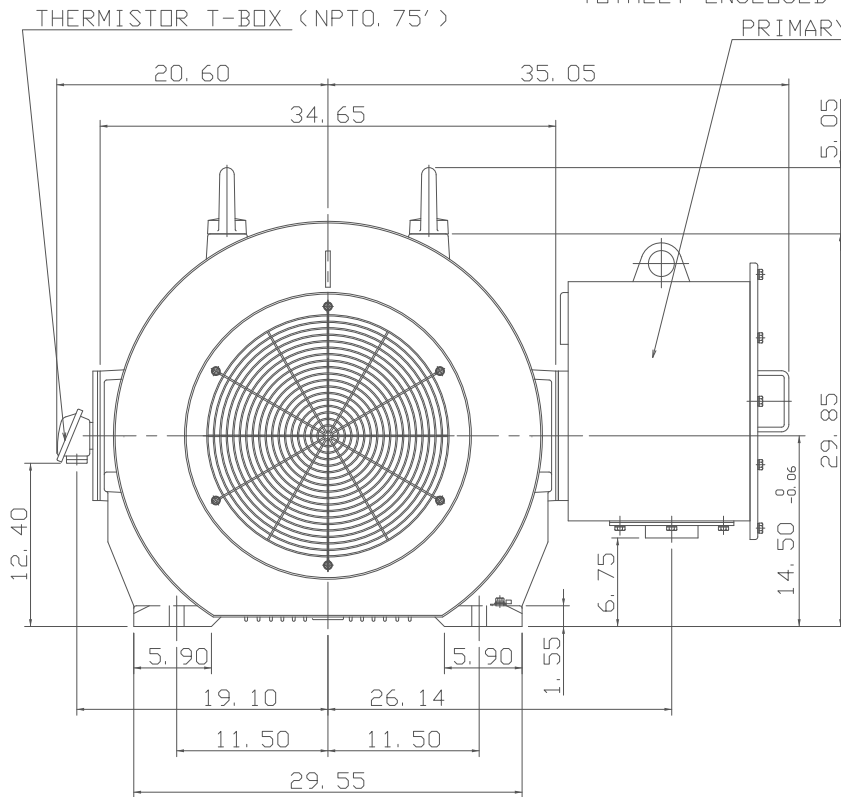


TYPE	OUTPUT		POLE	TIME RATING	VOLTAGE V	Hz	SYN. SPEED R. P. M
	HP.	kW.					
AEHH-GD	250	186.5	6	CONT.	460	60	1200

TOTALLY ENCLOSED FAN-COOLED TYPE, SQUIRREL-CAGE ROTOR



NOTE:

1. DIMENSIONS IN inch
2. FRAME NO.586/7UZ
3. F CLASS INSULATION, S. F. 1. 15
4. FOR BELT DRIVE
5. ENCLOSURE: IP55
6. BEARING SIZE: DRIVE-END NU326C3
OPP. DRIVE-END 6322
7. NON-SPARKING FAN
8. WITH THERMISTOR: PTC 140°C 3PCS
9. MOTOR APPROX. WEIGHT: 4610lb

DATE			FEB. 01, 2018		OUTLINE DIMENSIONS	
CATALOG NO. :			CDP2506RZ		3-PHASE INDUCTION MOTOR	
DWN.	J. WANG	MAR. 10. 2017	TEC Westinghouse		DWG NO.	REV: 02
CHKD.	H. HUANG	MAR. 10. 2017			4B040T894	
APPD.	C. LIU	MAR. 10. 2017				

6 5 4 3 2 1

6 5 4 3 2 1