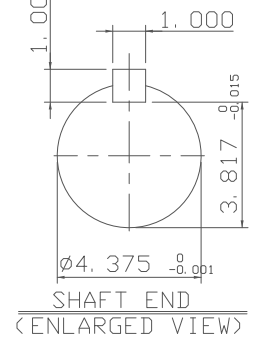
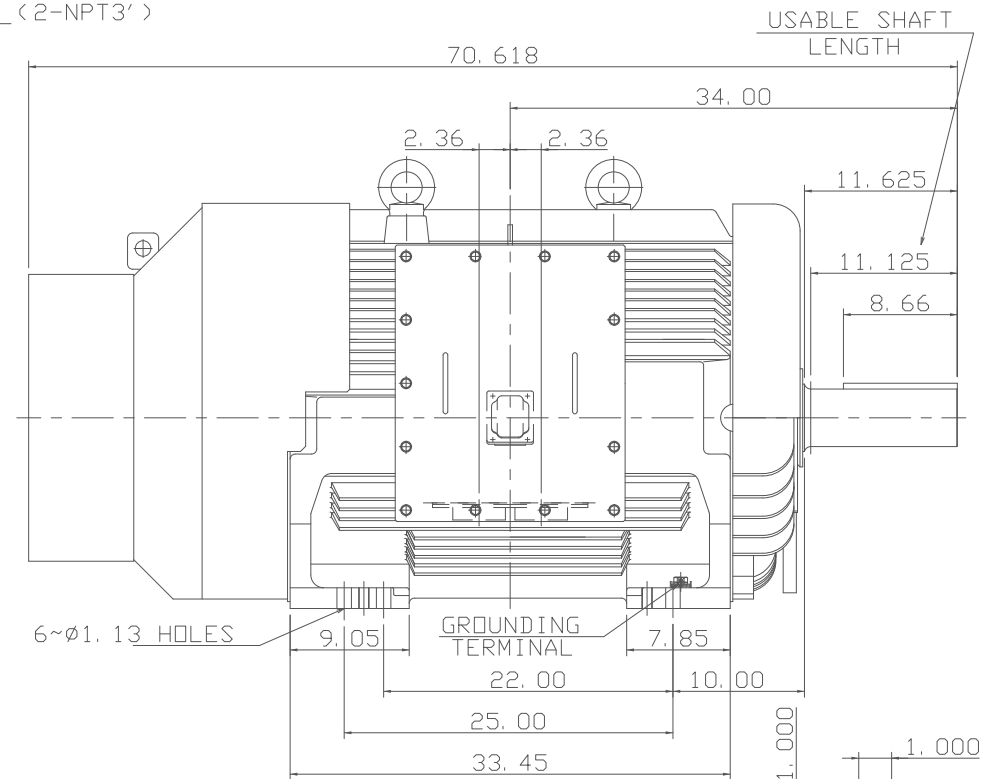
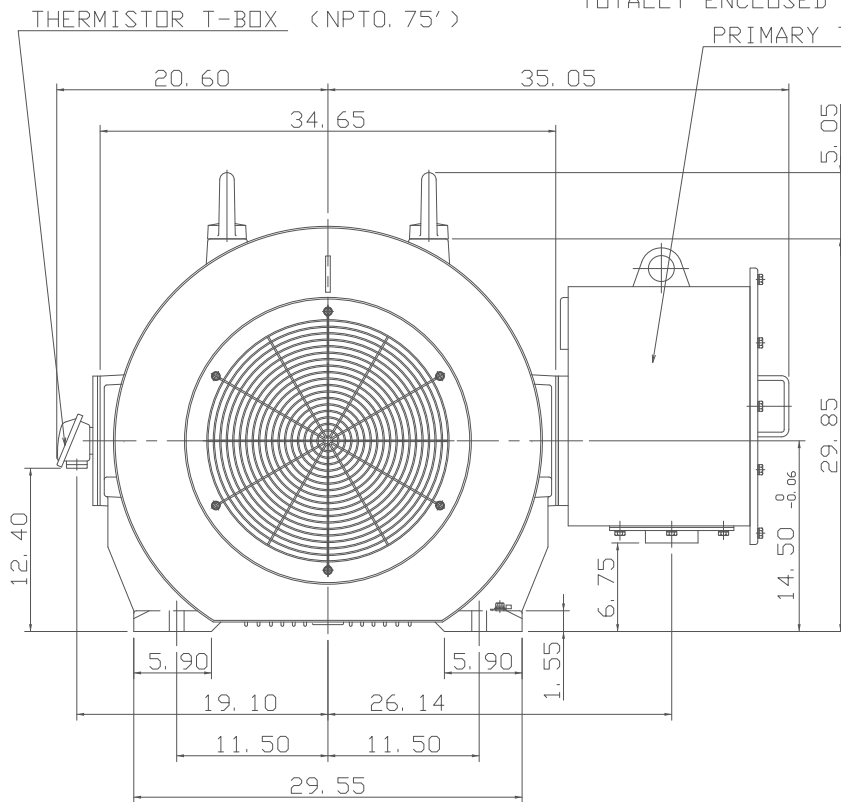


TYPE	OUTPUT		POLE	TIME RATING	VOLTAGE V	Hz	SYN. SPEED R. P. M
	HP.	kW.					
AEHH-GD	400	298.4	4	CONT.	460	60	1800

TOTALLY ENCLOSED FAN-COOLED TYPE, SQUIRREL-CAGE ROTOR



- NOTE:
- DIMENSIONS IN inch
  - FRAME NO.586/7UZ
  - F CLASS INSULATION, S. F. 1. 15
  - FOR BELT DRIVE
  - ENCLOSURE: IP55
  - BEARING SIZE: DRIVE-END NU326C3  
OPP. DRIVE-END 6322
  - NON-SPARKING FAN
  - WITH THERMISTOR: PTC 140°C 3PCS
  - MOTOR APPROX. WEIGHT: 4810lb

DATE			OUTLINE DIMENSIONS	
FEB. 01, 2018			3-PHASE INDUCTION MOTOR	
CATALOG NO. : CDP4004RZ			DWG NO. REV: 02	
TEC Westinghouse			4B040T945	

DWN.	J. WANG	MAR·20·2017
CHKD.	H. HUANG	MAR·20·2017
APPD.	C. LIU	MAR·20·2017