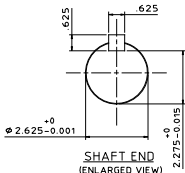
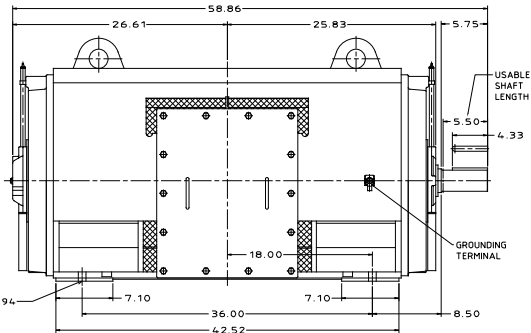
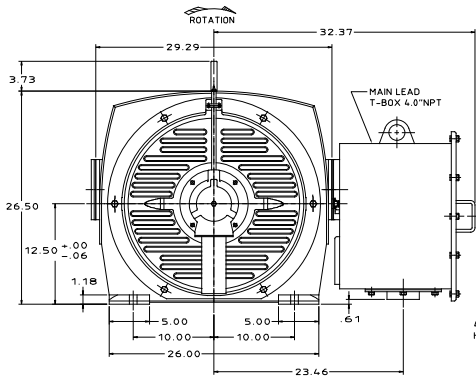


CATALOG #	TYPE	FRAME	OUTPUT		POLE	SYN. SPEED R.P.M.	VOLTAGE V.	Hz.	TIME RATING	INSULATION CLASS	SERVICE FACTOR	BEARINGS		WEIGHT LBS
			HP	kW								DE	NDE	
DHP60025	ASHH	5011A	600	447.4	2	3600	575	60	CONT.	F	1.15	6315C3	6315C3	3240

DRIP PROOF TYPE. SQUIRREL CAGE ROTOR



NOTES:

1. DIMENSIONS IN INCH.
2. ENCLOSURE: IP22.
3. FOR DIRECT FLEXIBLE COUPLING.
4. PROVISION FOR BEARING RTD MOUNTING: 2X .50" NPT PER BRACKET.

REV. DATA	REV. NO
	01
<b>TECO Westinghouse</b>	
3-PHASE INDUCTION MOTOR	
OUTLINE DIMENSIONS	
DWG. NO. DHP60025	
REP. / DRAWN BY DWN. K. MILNER	APP'D BY APPD. T. FELPS
TECO-WESTINGHOUSE MOTOR COMPANY ROUND ROCK, TEXAS USA	