

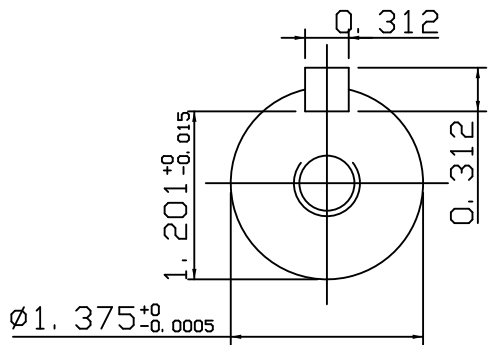
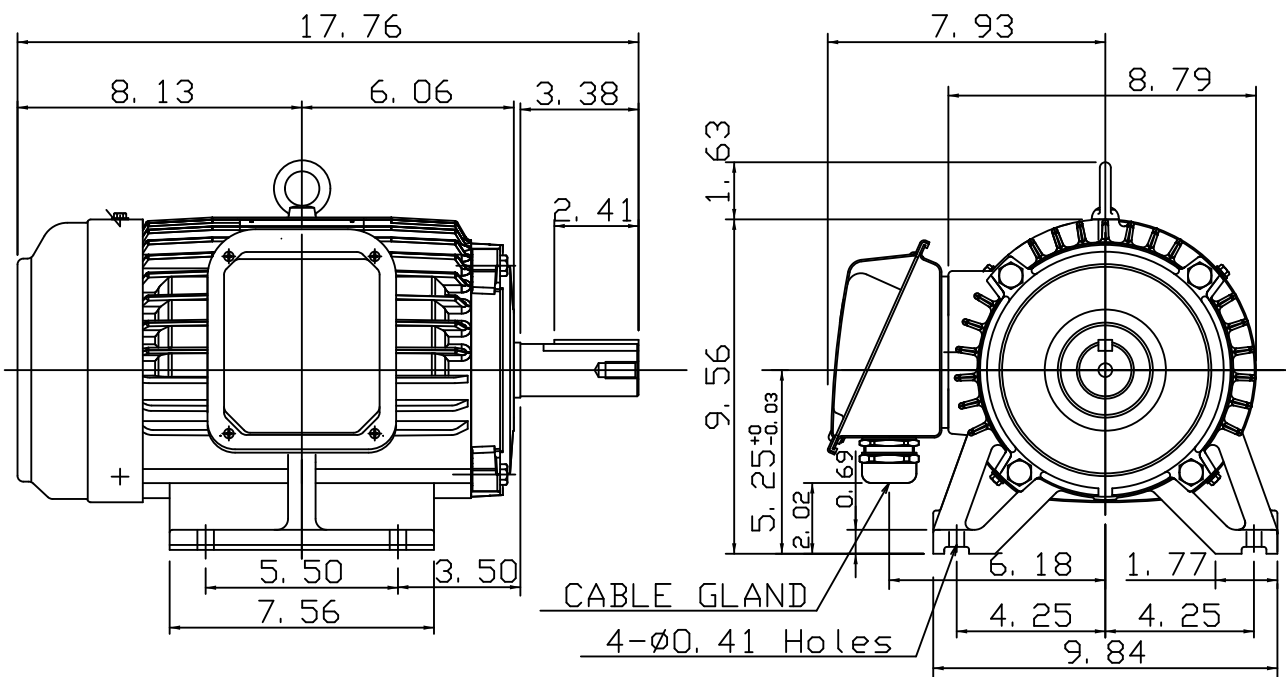
DATE: JUNE 27, 2019
 CATALOG NO.: DM7/54

OUTLINE DIMENSIONS
 PERMANENT MAGNET MOTOR

MOTOR TYPE: DVEM
 FRAME NO. 213T

Pole	HP	kW	Hz	VOLT	r/min(rpm)
6	7.5	5.5	90	460	1800

Ins	Rating	Dimension in	Approx Weight	Bearings
F	CONT.	inch	101 lbs	DE: 6308ZZ NDE: 6306ZZ



Note: 1. IP55 Protection
 2. CABLE GLAND(PF1")
 SUITABLE FOR RANGE
 Ø0.71~Ø0.98

06.20.19

邱柏人

E8195537T2

DWG.	Mahato	04·18·19
CHKD.	P. Z. HSIEH	04·25·19
APPD.	M. C. JENG	04·25·19



DWG NO.
 31049R319011