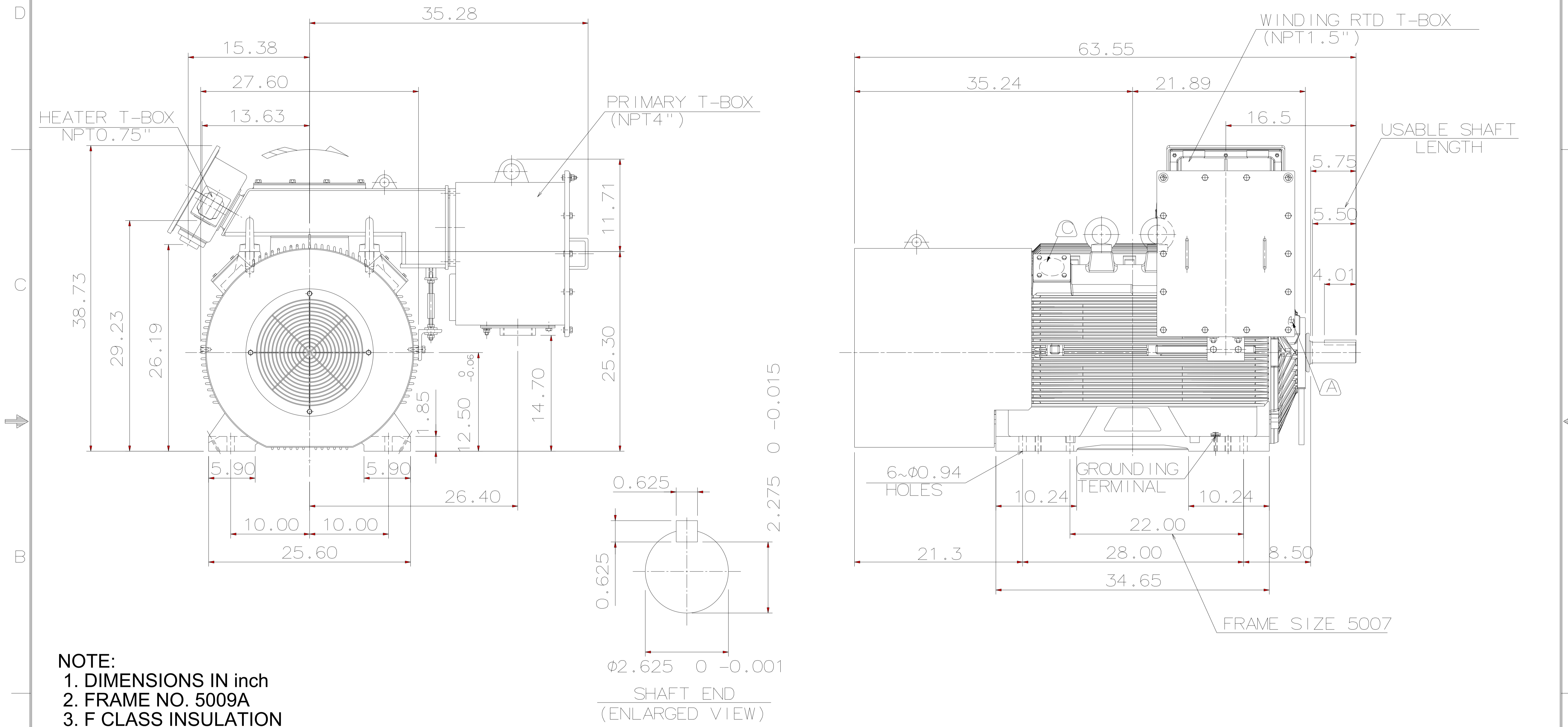


TYPE	OUTPUT		POLE	TIME RATING	VOLTAGE V	Hz	SYN. SPEED R.P.M
	HP.	kW.					
AFHH	400	298	2	CONT.	460	60	3600

TOTALLY ENCLOSED FAN-COOLED, TYPE. SQUIRREL-CAGE ROTOR



- NOTE:**
1. DIMENSIONS IN inch
 2. FRAME NO. 5009A
 3. F CLASS INSULATION
 4. FOR DIRECT FLEXIBLE COUPLING
 5. ENCLOSURE: IP55
 6. BEARING SIZE: DRIVE-END 6315C3
OPP. DRIVE-END 6315/C3VL0241
 7. WITH SAPCE HEATER & WINDING RTD
 8. MOTOR APPROX. WEIGHT: 3900 lb
- Ⓑ FOR BEARING RTD, END BRACKETS SHALL BE PRE-DRILLED AND PLUGGED.
- Ⓒ FOR AUXILIARY, FRAME SHALL BE PRE-DRILLED AND COVERD WITH STEEL PLATE.

DATE October 14, 2020	OUTLINE DIMENSIONS	
Catalog No.: EPF4002	3-PHASE INDUCTION MOTOR	
DWN. L. JHENG APR. 22. 2019	DWG NO.	REV: 01
CHKD. H. WANG APR. 23. 2019	5A040C159	
APPD. C. WANG APR. 23. 2019	TEC Westinghouse	

6 5 4 3 2 1

6 5 4 3 2 1