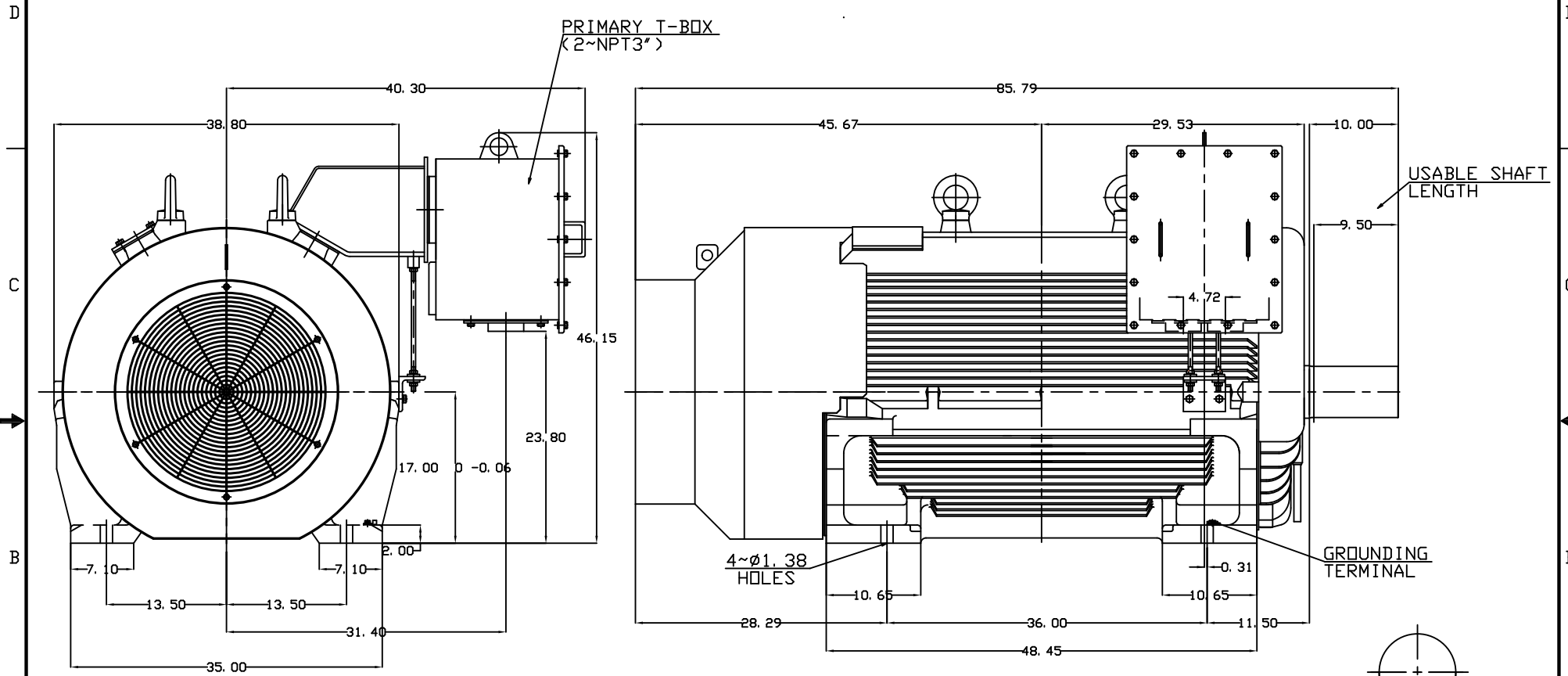


TYPE	OUTPUT		POLE	TIME RATING	VOLTAGE V	Hz	SYN. SPEED R. P. M
	HP.	KW.					
AEHE-SY	800	596.8	8	CONT	460	60	900

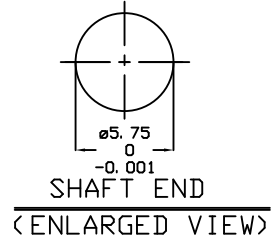
TOTALLY ENCLOSED FAN-COOLED TYPE, SQUIRREL-CAGE ROTOR

PRIMARY T-BOX
(2~NPT3")



USABLE SHAFT LENGTH

GROUNDING TERMINAL



NOTE:

1. DIMENSIONS IN inch
2. FRAME NO. 6808UZ
3. F CLASS INSULATION, S.F.1.15
4. FOR DIRECT FLEXIBLE COUPLING
5. ENCLOSURE: IP55
6. BEARING SIZE: DRIVE-END 6330C3
OPP. DRIVE-END 6322C3
7. MOTOR APPROX. WEIGHT: 8850 LBS

DATE	12/7/15	OUTLINE DIMENSIONS
CATALOG #	EY8008	3-PHASE INDUCTION MOTOR

DWN.	J. CHANG	MAR-06-2015
CHKD.	H. HUANG	MAR-06-2015
APPD.	C. LIU	MAR-06-2015



DWG NO.	REV: 00
4B040G901	