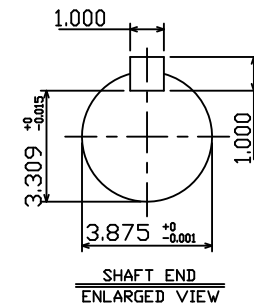
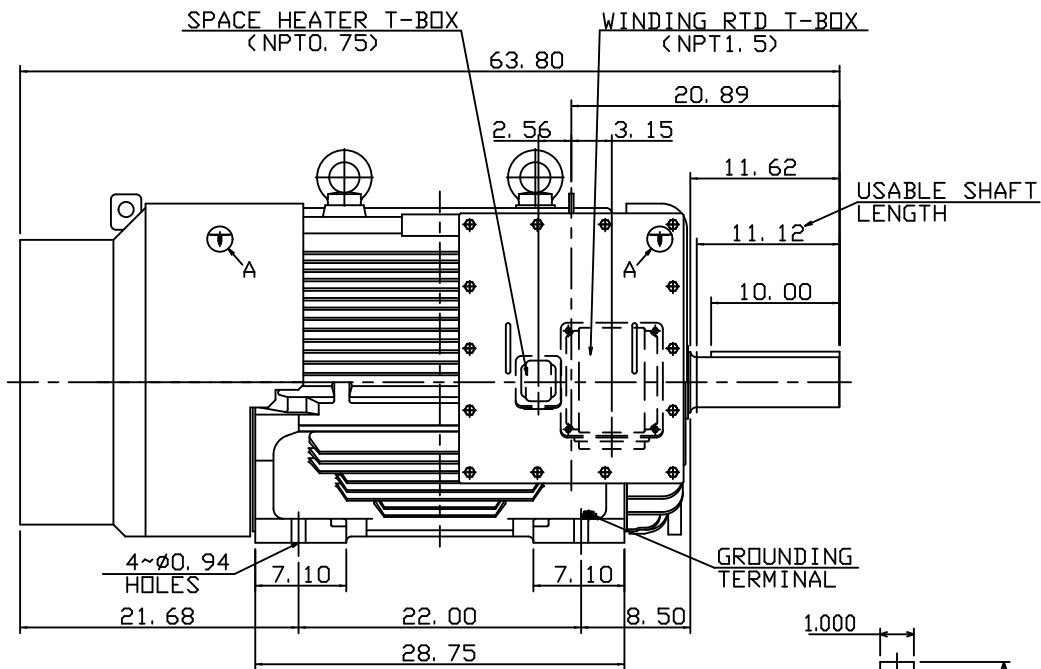
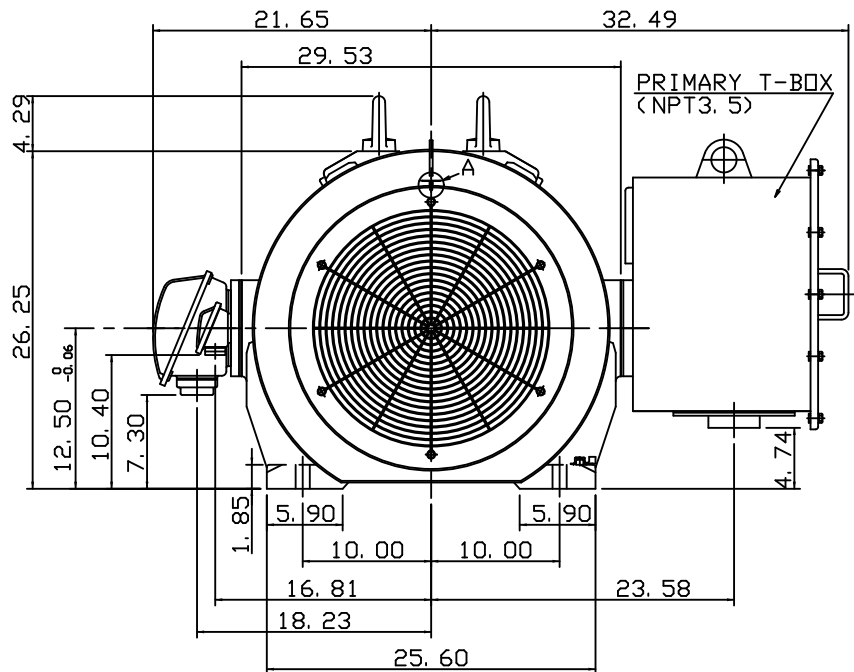


$\varnothing 1.38$ SPOTFACE
 1/4" -28UNF TAP
 DEPTH 0.47

DETAIL A
 (PROVISION FOR VIBRATION SENSOR)

TYPE	OUTPUT		POLE	TIME RATING	VOLTAGE V	Hz	SYN. SPEED R. P. M.
	HP.	kW.					
AEHAGD	250	186	4	CONT.	2300/4000	60	1800

TOTALLY ENCLOSED FAN-COOLED TYPE, SQUIRREL-CAGE ROTOR



NOTE:

- DIMENSIONS IN INCH
- FRAME NO. 5007C
- F CLASS INSULATION, S.F.1.15
- FOR DIRECT FLEXIBLE COUPLING
- BEARING SIZE: DRIVE END: NU324C3
NON-DRIVE END: 6320C3
- ENCLOSURE: IP55
- WITH WINDING RTD: PT 100 Ω /0°C 6PCS
- WITH SPACE HEATER: SINGLE PHASE, 120V
- CORROSION PROOF
- NON-SPARKING FAN
- PROVISION FOR BEARING RTD MOUNTING: 2~PT1/2" TAPS PER BRACKET
- MOTOR APPROX. WEIGHT: 4050 LBS

4A040G272

OUTLINE DIMENSIONS
 3-PHASE INDUCTION MOTOR

DWN.	C. RAM	DEC 07 2015	CATALOG NO. KD2504R
DWN.	J.CHANG	MAY 22 2015	
CHKD.	H.HUANG	MAY 22 2015	TEC Westinghouse
APPD.	C.LIU	MAY 22 2015	

DWG NO. REV: 00
 4B040L385