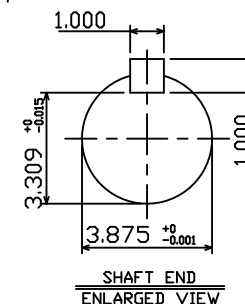
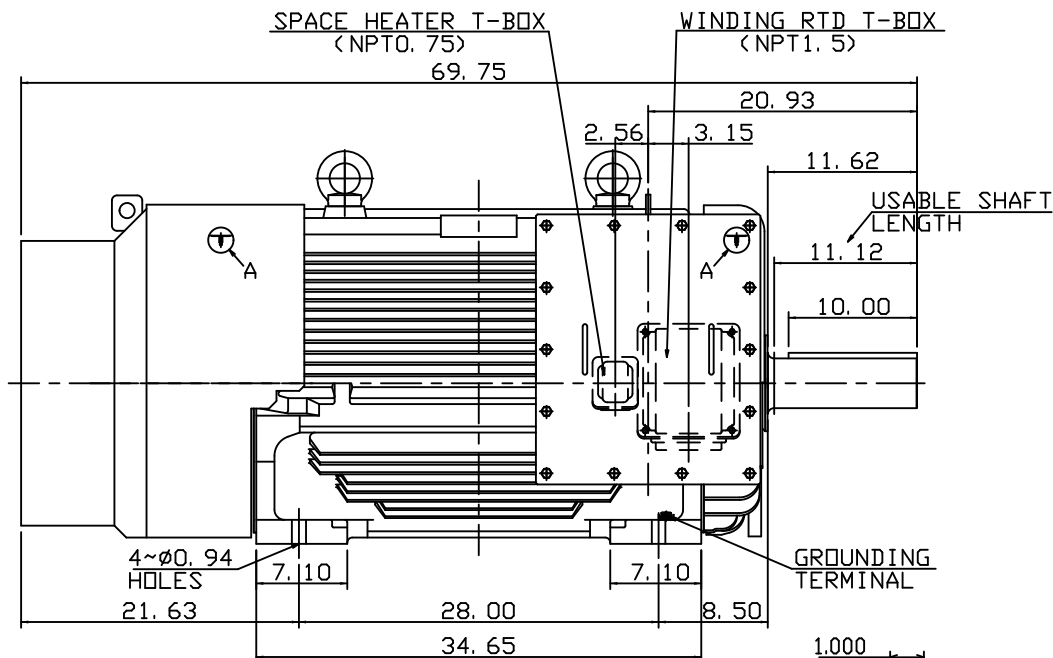
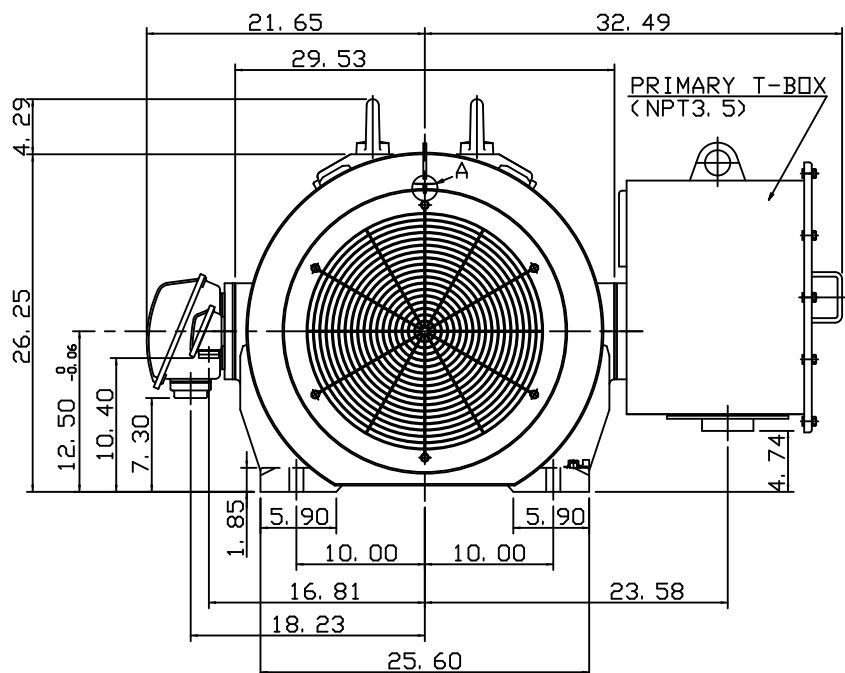


DETAIL A
(PROVISION FOR VIBRATION SENSOR)

| TYPE | OUTPUT | | POLE | TIME RATING | VOLTAGE V | Hz | SYN. SPEED R. P. M. |
|--------|--------|-----|------|-------------|-----------|----|---------------------|
| | HP. | kW. | | | | | |
| AEHAGD | 300 | 224 | 4 | CONT. | 2300/4000 | 60 | 1800 |

TOTALLY ENCLOSED FAN-COOLED TYPE, SQUIRREL-CAGE ROTOR



NOTE:

- DIMENSIONS IN INCH
- FRAME NO. 5009C
- F CLASS INSULATION, S.F.1.15
- FOR DIRECT FLEXIBLE COUPLING
- BEARING SIZE: DRIVE END: NU324
NON-DRIVE END: 6320C3
- ENCLOSURE: IP55
- WITH WINDING RTD: PT 100Ω/0°C 6PCS
- WITH SPACE HEATER: SINGLE PHASE, 120V
- CORROSION PROOF
- NON-SPARKING FAN
- PROVISION FOR BEARING RTD MOUNTING: 2~PT1/2" TAPS PER BRACKET
- MOTOR APPROX. WEIGHT: 4155 LBS

4A040G272

| | | | |
|-------|---------|-------------|------------------------|
| DWN. | C. RAM | DEC 07 2015 | CATALOG NO. KD3004R |
| DWN. | J.CHANG | MAY 26 2015 | |
| CHKD. | H.HUANG | MAY 26 2015 | TEC Westinghouse |
| APPD. | C.LIU | MAY 26 2015 | |

OUTLINE DIMENSIONS
3-PHASE INDUCTION MOTOR

DWG NO. REV: 00
4B040L388