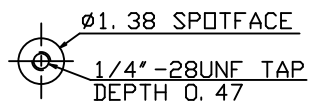
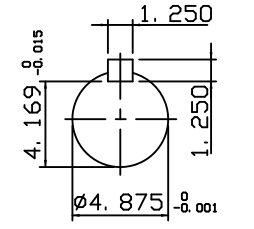
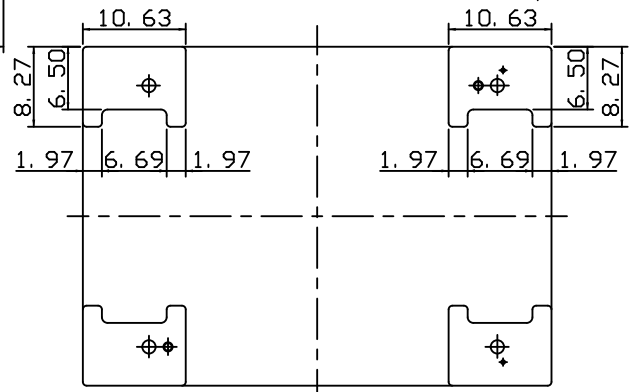
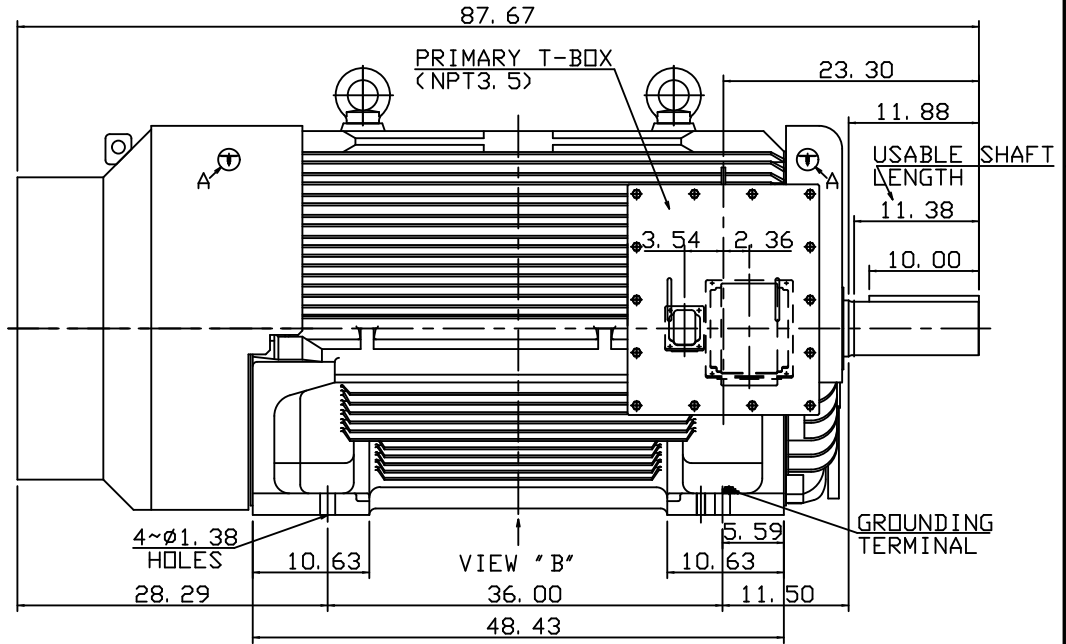
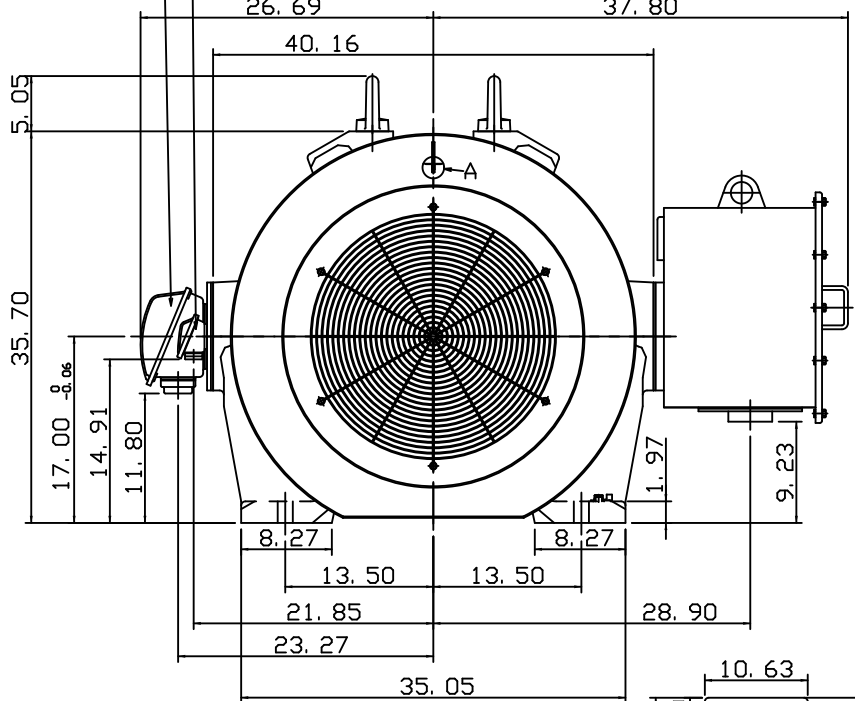


TYPE	OUTPUT		POLE	TIME RATING	VOLTAGE V	Hz	SYN. SPEED R. P. M.
	HP.	kW.					
AEHAGD	600	447	8	CONT.	2300/4000	60	900



TOTALLY ENCLOSED FAN-COOLED TYPE, SQUIRREL-CAGE ROTOR **DETAIL A**
(PROVISION FOR VIBRATION SENSOR)



- NOTE:
- DIMENSIONS IN INCH
 - FRAME NO. 6808C
 - F CLASS INSULATION, S.F.1.15
 - FOR BELT SERVICE
 - BEARING SIZE: DRIVE END: 6326C3
NON-DRIVE END: 6322C3
 - ENCLOSURE: IP55
 - WITH WINDING RTD: PT 100Ω/0°C 6PCS
 - WITH SPACE HEATER: SINGLE PHASE, 120V
 - CORROSION PROOF
 - NON-SPARKING FAN
 - PROVISION FOR BEARING RTD MOUNTING: 2~PT1/2" TAPS PER BRACKET
 - MOTOR APPROX. WEIGHT: 7830 LBS

SHAFT END
(ENLARGED VIEW)

OUTLINE DIMENSIONS
3-PHASE INDUCTION MOTOR

DWN.	C. RAM	DEC 07 2015	CATALOG NO.
DWN.	J.CHANG	JUN-03-2015	KD6008
CHKD.	H.HUANG	JUN-03-2015	
APPD.	C.LIU	JUN-03-2015	

TEC Westinghouse

DWG NO. REV: 00
4B040L401

4A040L518