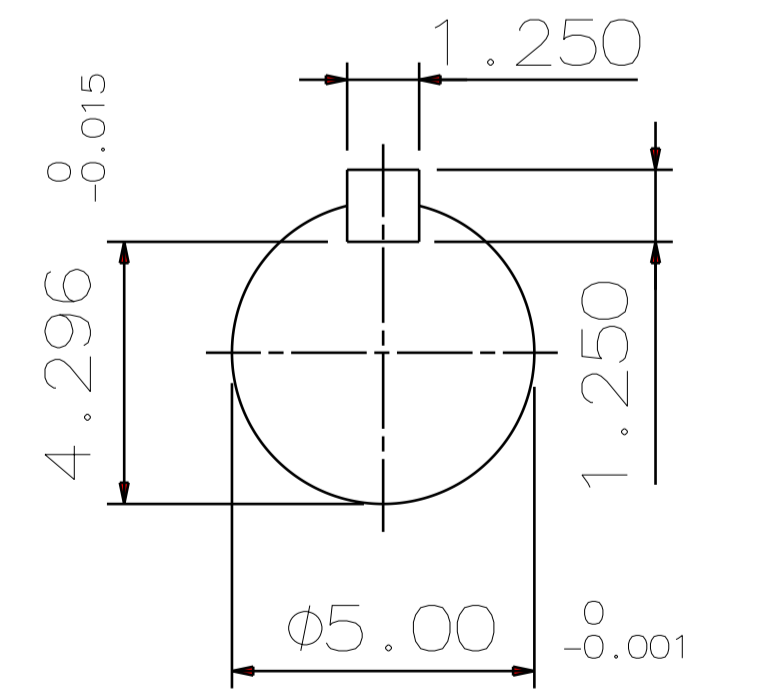
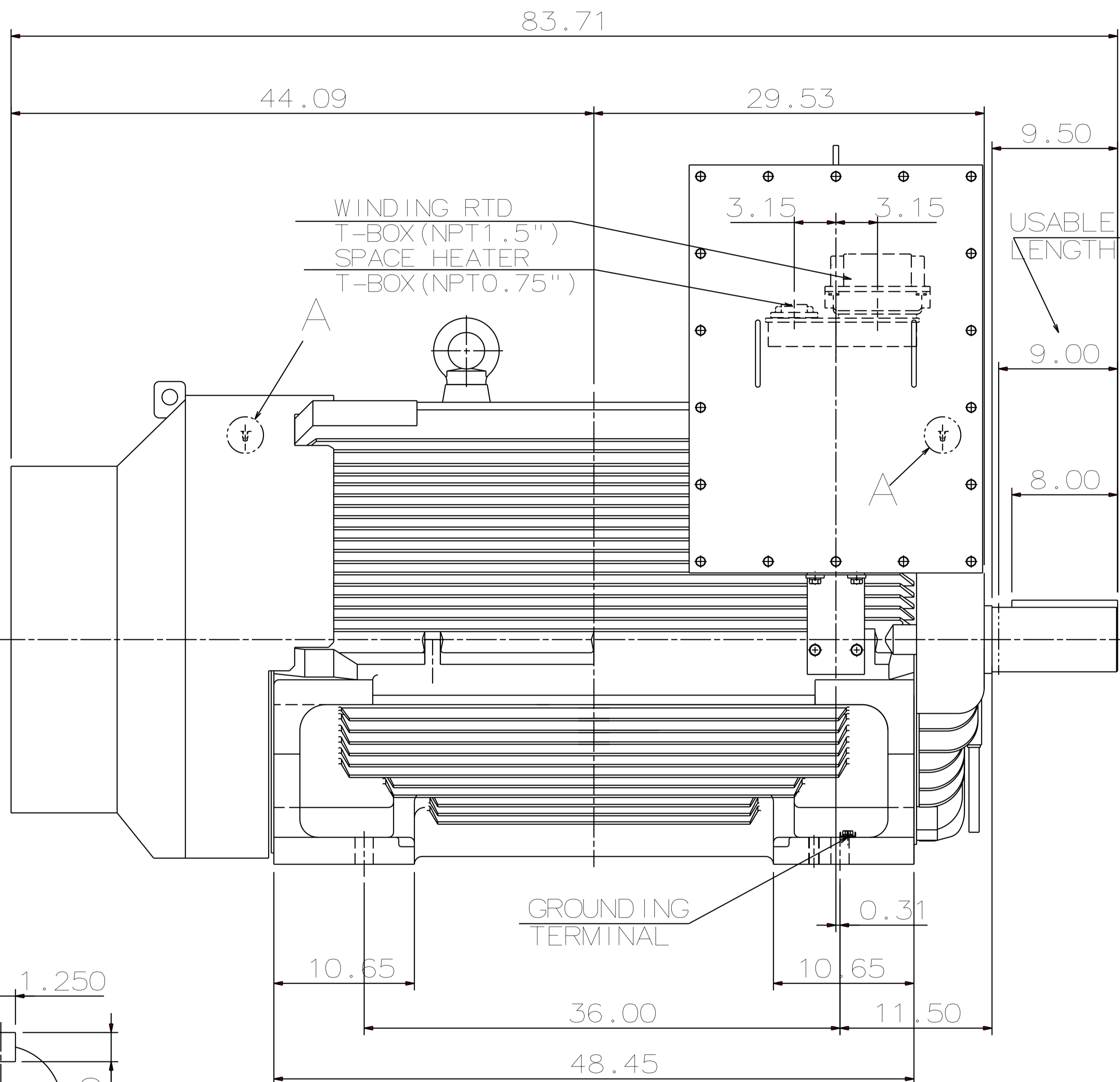
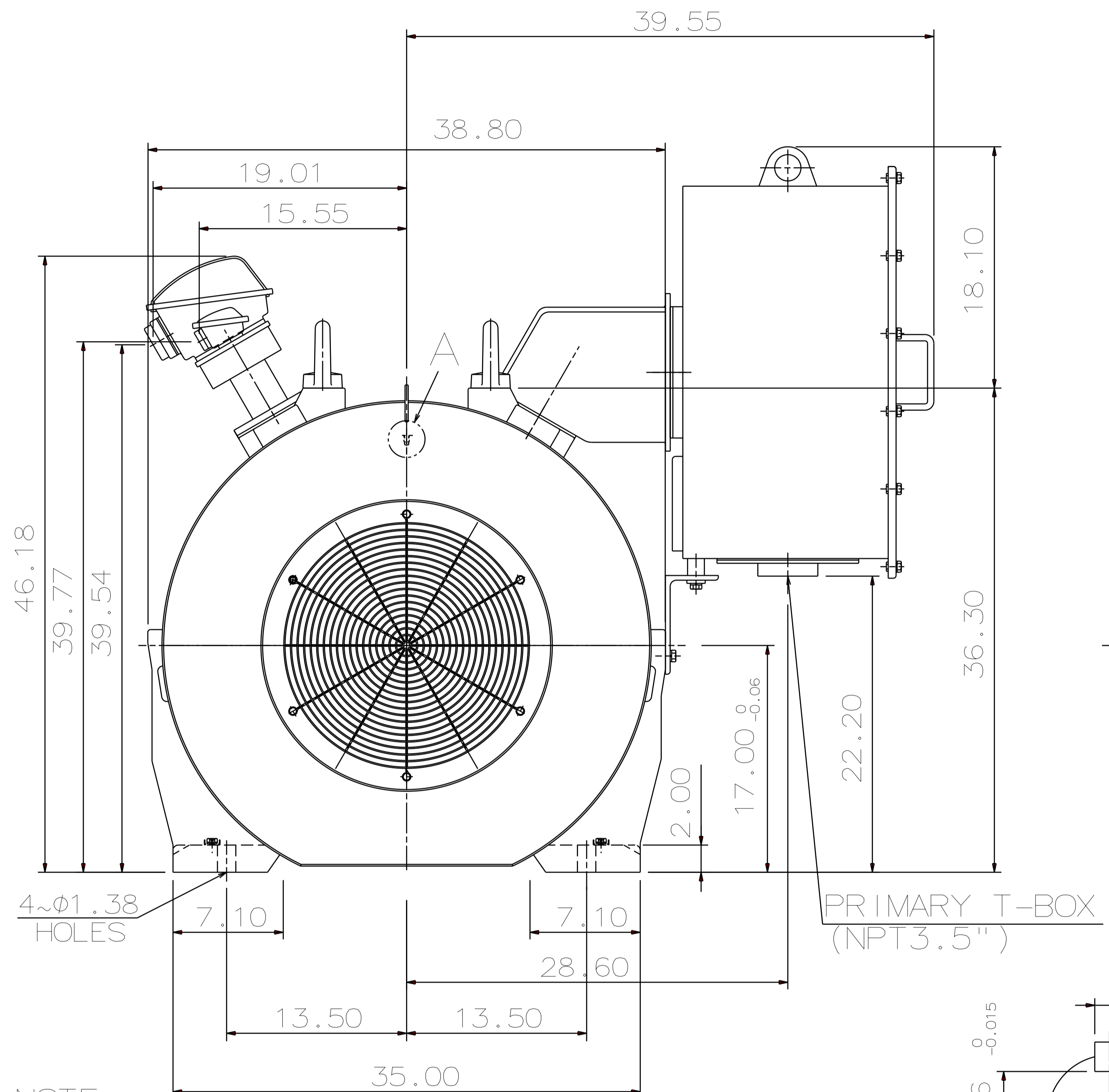


DETAIL A

PROVISION FOR VIBRATION DETECTORS

TYPE	OUTPUT		POLE	TIME RATING	VOLTAGE V	Hz	SYN. SPEED R.P.M
	HP.	kW.					
AFHGTK	1000	745.7	4	CONT.	2300	60	1800

TOTALLY ENCLOSED FAN-COOLED TYPE SQUIRREL-CAGE ROTOR



SHAFT END  
(ENLARGED VIEW)

- NOTE:
1. DIMENSIONS IN inch
  2. FRAME NO. 6808B
  3. F CLASS INSULATION, S.F. 1.15
  4. FOR DIRECT FLEXIBLE COUPLING
  5. ENCLOSURE: IP54
  6. BEARING SIZE: DRIVE-END 6326C3  
OPP. DRIVE-END 6322C3
  7. WITH WINDING RTD: PT 100Ω/0°C 6PCS
  8. WITH SPACE HEATER: 1φ 120V
  9. PROVISION FOR BEARING RTD MOUNTING: 2~PT 1/2" TAPS PER BRACKET
  10. CLASS I, DIV. 2, GROUP B,C&D, T3  
CLASS II, DIV. 2, GROUP F&G

11. NON-SPARKING FAN
12. CORROSION PROOF
13. NOISE: BELOW 88dBA (TOLERANCE 3dBA)  
AT 1 METER DISTANCE NO LOAD
14. APPROX. WEIGHT: 9535 lb

DWN.	J.HSIAO	SEP.16.2015
CHKD.	C.SHIH	SEP.17.2015
APPD.	C.LIU	SEP.17.2015

DATE	DEC 08 2016	OUTLINE DIMENSIONS	
	KF10004	3-PHASE INDUCTION MOTOR	
TEC Westinghouse		DWG NO.	REV:00
		4B040L928	1/1