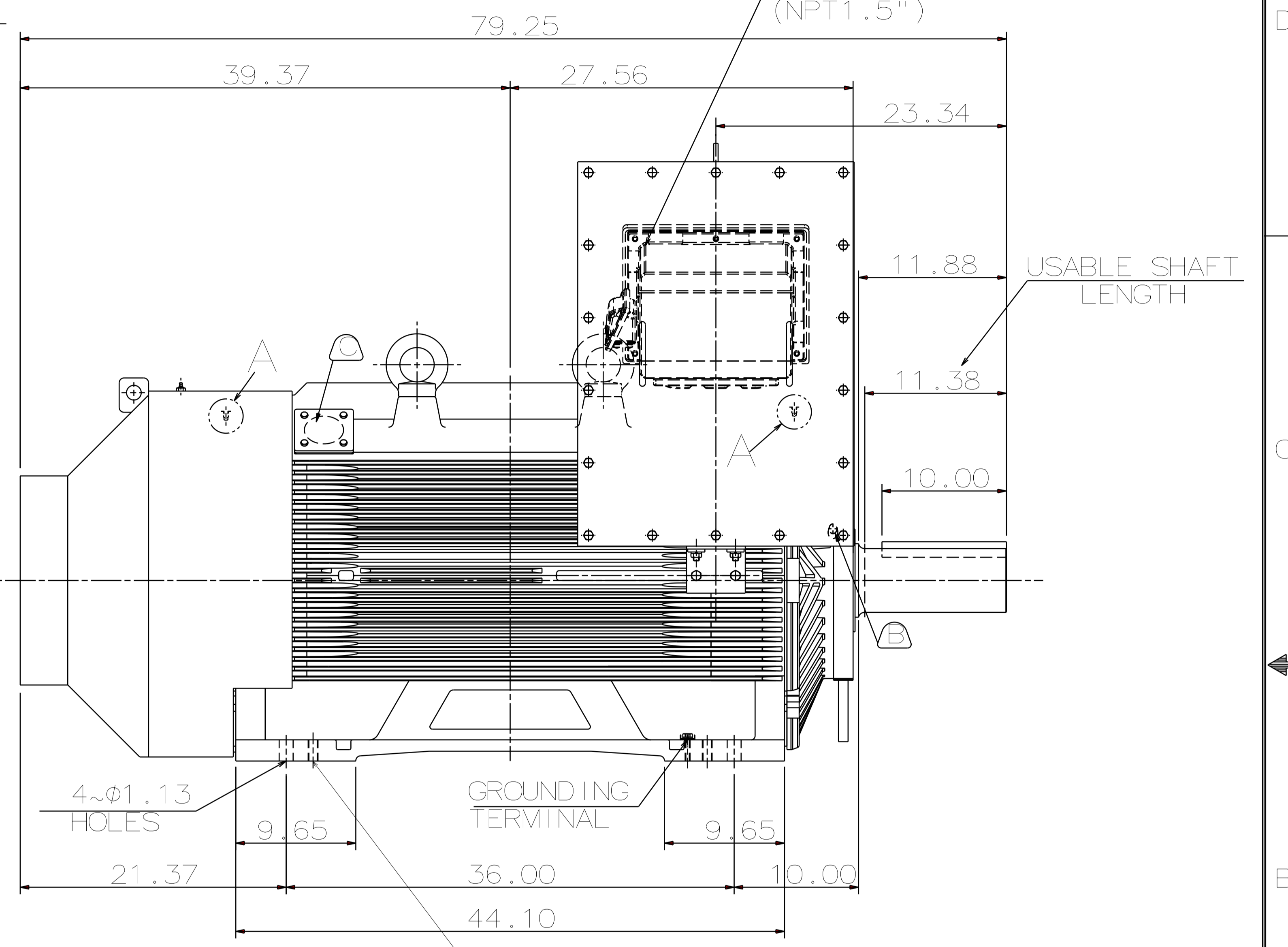
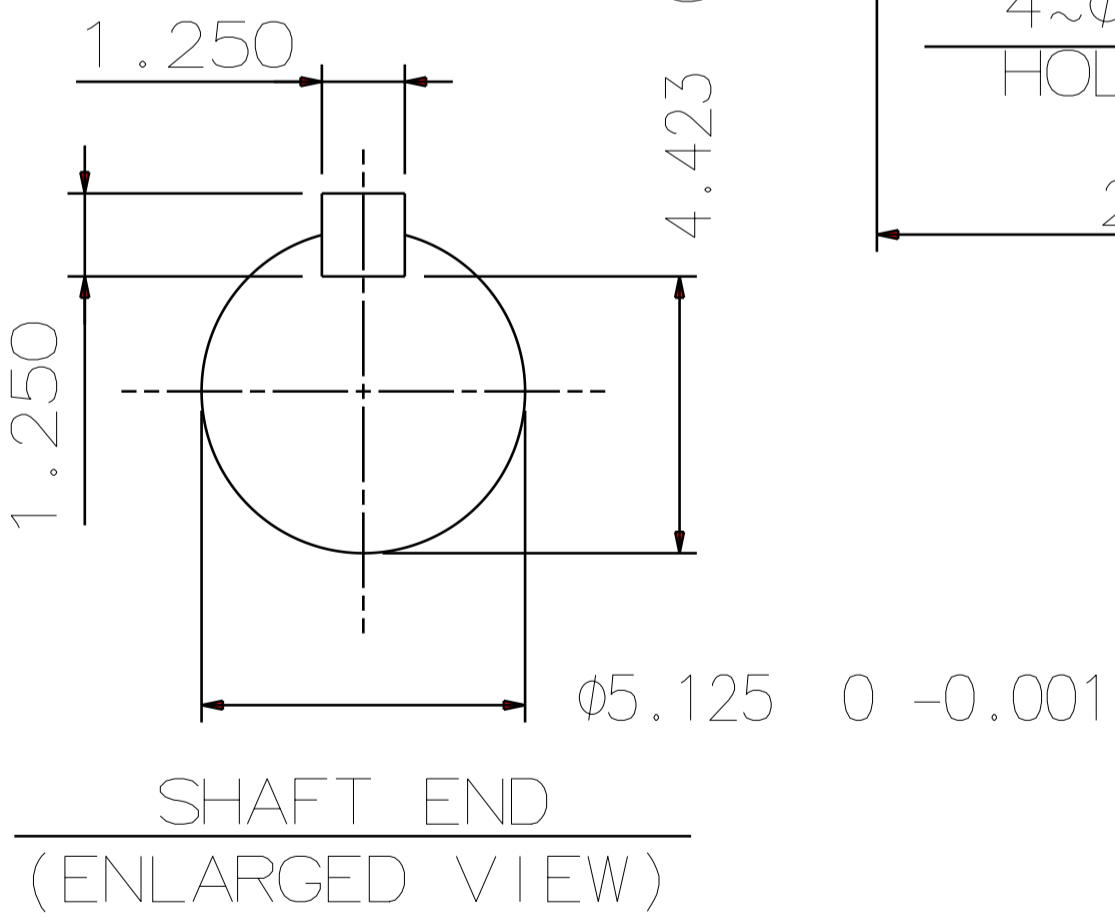
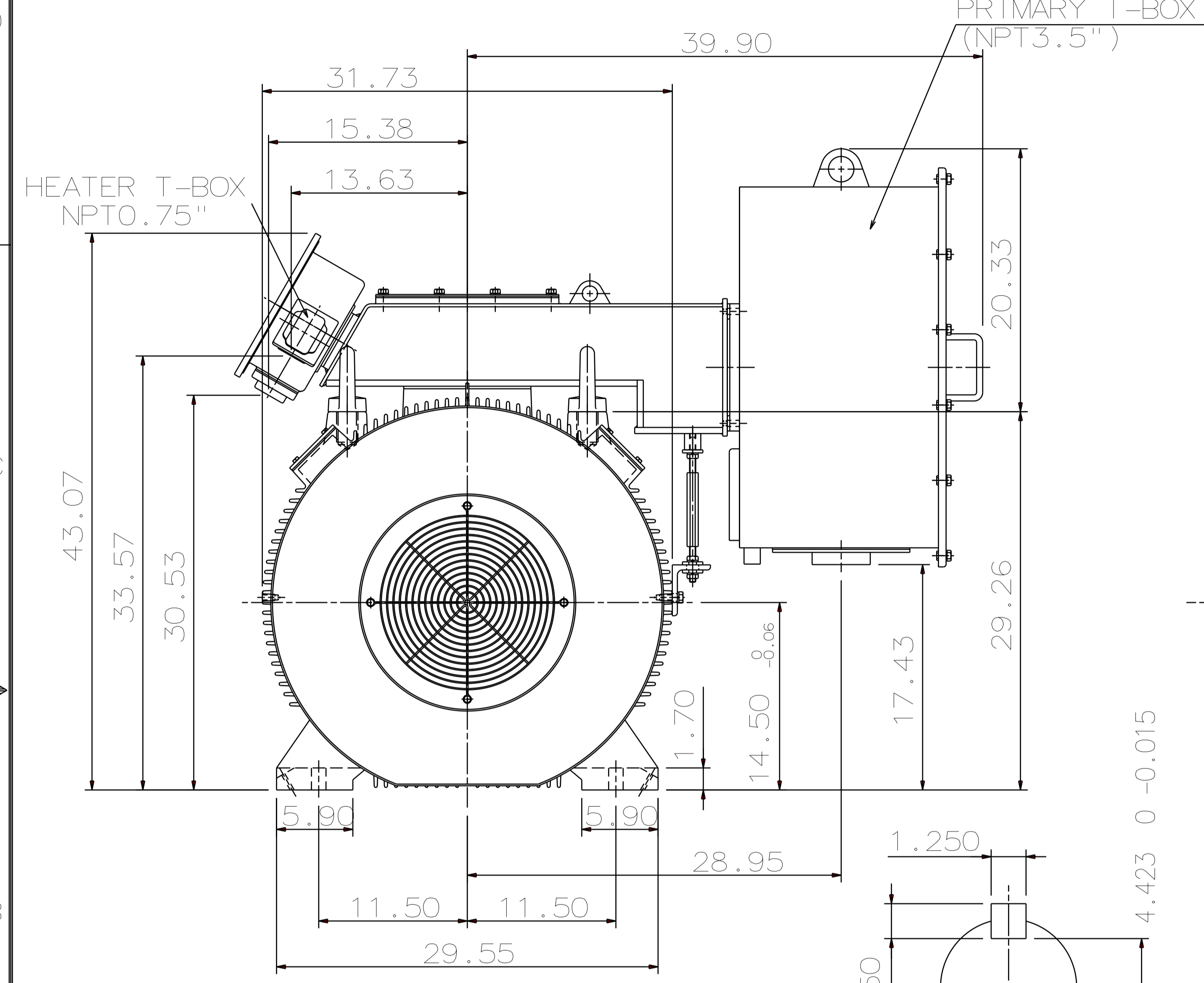


1/4"-28UNF TAP,  
DEPTH 0.50  
DETAIL A  
PROVISION FOR VIBRATION DETECTORS

TYPE	OUTPUT		POLE	TIME RATING	VOLTAGE V	Hz	SYN. SPEED R.P.M
	HP.	kW.					
AFHP	1000	746	4	CONT.	2300/4000	60	1800

TOTALLY ENCLOSED FAN-COOLED, TYPE. SQUIRREL-CAGE ROTOR

WINDING RTD T-BOX (NPT1.5")



4X-M20 JACKING PROVISIONS

- NOTE:
1. DIMENSIONS IN inch
  2. FRAME NO. 5810C
  3. F CLASS INSULATION
  4. FOR DIRECT FLEXIBLE COUPLING
  5. ENCLOSURE: IP55
  6. BEARING SIZE: DRIVE-END NU330C3  
OPP. DRIVE-END 6322C3
  7. WITH SPACE HEATER & WINDING RTD
  8. MOTOR APPROX. WEIGHT: 7100 lb

ⓑ FOR BEARING RTD, END BRACKETS SHALL BE PRE-DRILLED AND PLUGGED.  
Ⓒ FOR AUXILIARY, FRAME SHALL BE PRE-DRILLED AND COVERD WITH STEEL PLATE.

DATE 070822	OUTLINE DIMENSIONS	
<b>KPF1004R</b>	3-PHASE INDUCTION MOTOR	
DWN. L. JHENG APR 22 2019	DWG NO.	REV:01
CHKD. H. WANG APR 23 2019	5A040C247	
APPD. C. WANG APR 23 2019	TEC Westinghouse	