

6

5

4

3

2

1

1/4" -28UNF TAP, DEPTH 0.50

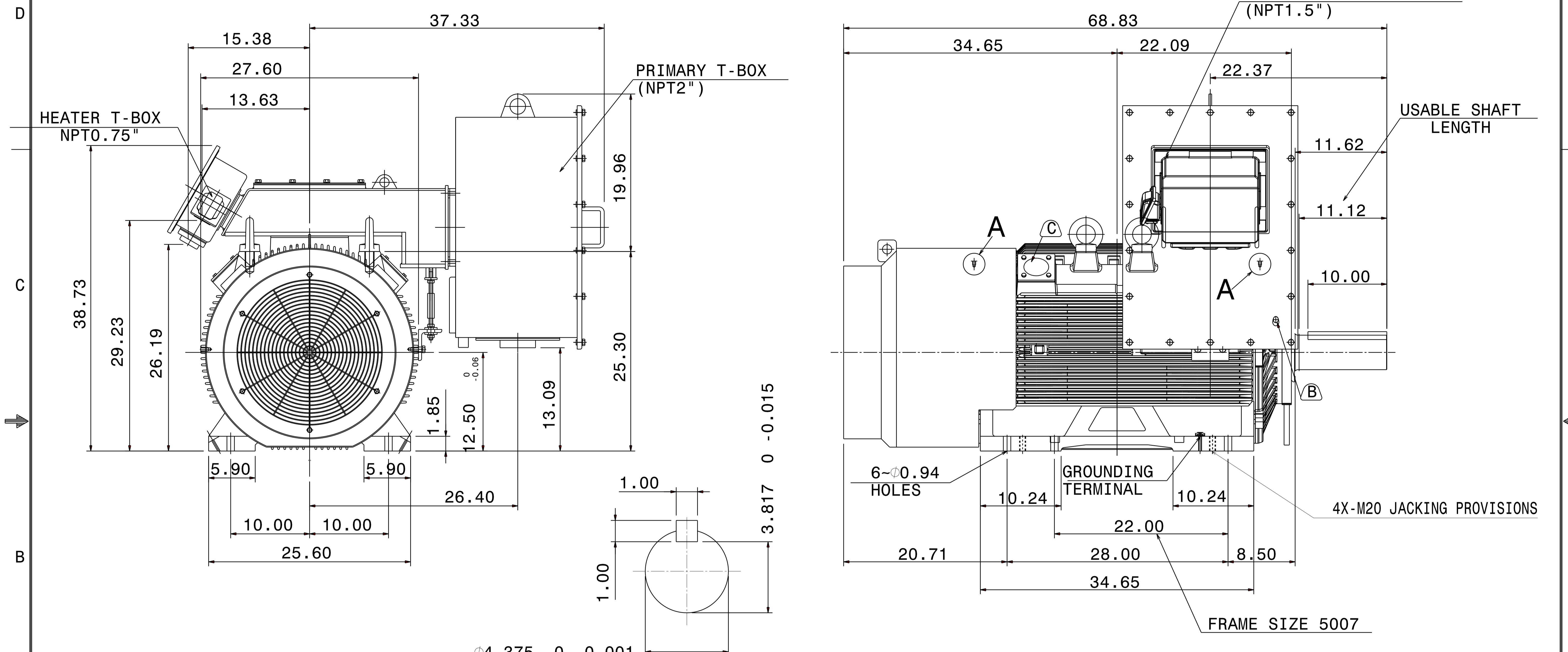
TYPE	OUTPUT		POLE	TIME RATING	VOLTAGE V	Hz	SYN.SPEED R.P.M
	HP.	kW.					
AFHP	250	187	8	CONT.	2300/4000	.60	900

DETAIL A

PROVISION FOR VIBRATION DETECTORS

TOTALLY ENCLOSED FAN-COOLED TYPE. SQUIRREL-CAGE ROTOR

WINDING RTD T-BOX (NPT1.5")



NOTE:

1. DIMENSIONS IN inch
 2. FRAME NO. 5009C
 3. F CLASS INSULATION
 4. FOR DIRECT FLEXIBLE COUPLING
 5. ENCLOSURE: IP55
 6. BEARING SIZE: DRIVE-END NU324C3
OPP. DRIVE-END 6320C3
 7. WITH SAPCE HEATER & WINDING RTD
 8. MOTOR APPROX. WEIGHT: 3940 lb
- (B) FOR BEARING RTD, END BRACKETS SHALL BE PRE-DRILLED AND PLUGGED.
- (C) FOR AUXILIARY, FRAME SHALL BE PRE-DRILLED AND COVERD WITH STEEL PLATE.

Ø4.375 0 -0.001

SHAFT END (ENLARGED VIEW)

DATE			OUTLINE DIMENSIONS	
KPF2008R			3-PHASE INDUCTION MOTOR	
DWN.	L.JHENG	APR.29 2019	DWG NO.	REV: 02
CHKD.	H.WANG	APR.30 2019	5A040C216	
APPD.	C.WANG	APR.30 2019	TEC Westinghouse	

6

5

4

3

2

1

1/4