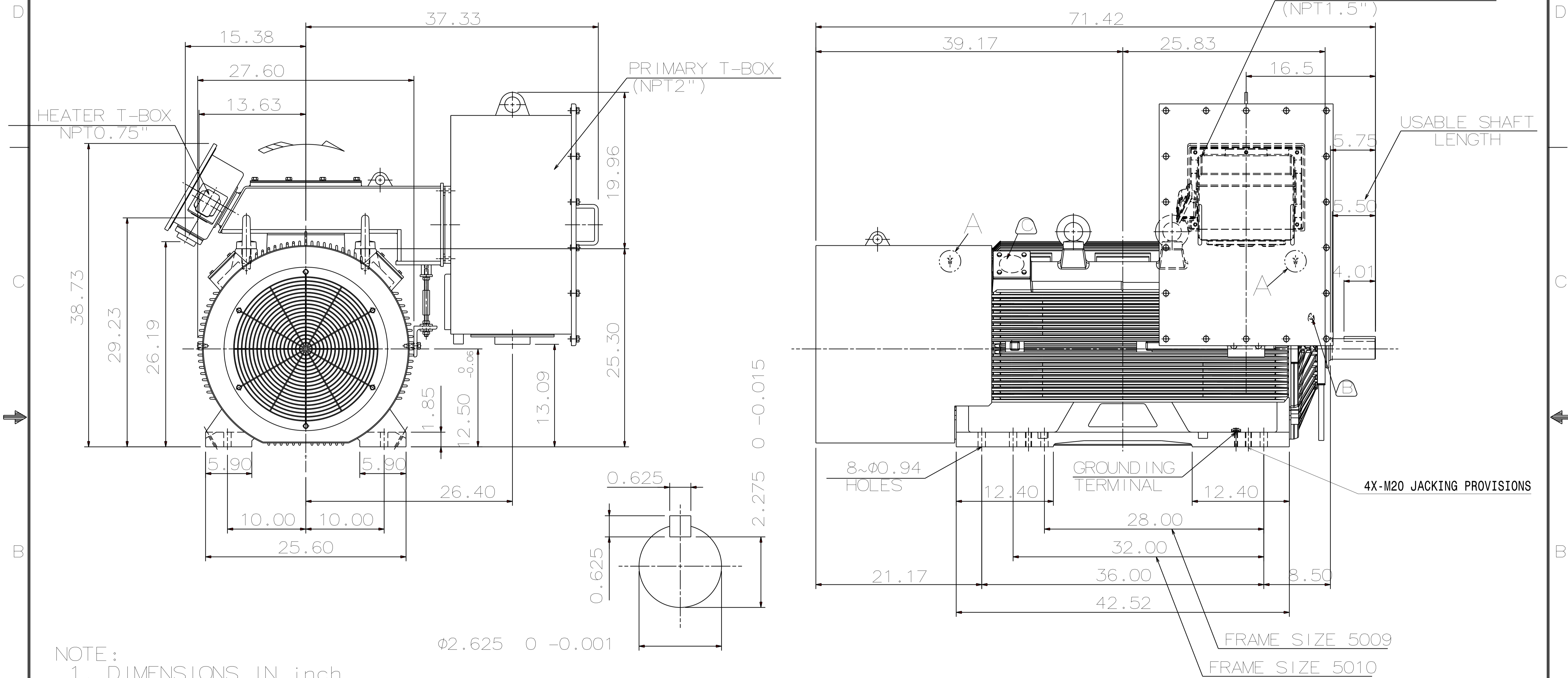


1/4"-28UNF TAP,
DEPTH 0.50
DETAIL A

TYPE	OUTPUT		POLE	TIME RATING	VOLTAGE V	Hz	SYN. SPEED R.P.M
	HP.	kW.					
AFHP	400	298	2	CONT.	2300/4000	60	3600

PROVISION FOR VIBRATION DETECTORS

TOTALLY ENCLOSED FAN-COOLED, TYPE. SQUIRREL-CAGE ROTOR



NOTE:

- DIMENSIONS IN inch
 - FRAME NO. 5011A
 - F CLASS INSULATION
 - FOR DIRECT FLEXIBLE COUPLING
 - ENCLOSURE: IP55
 - BEARING SIZE: DRIVE-END 6315C3
OPP. DRIVE-END 6315/C3VL0241
 - WITH SPACE HEATER & WINDING RTD
 - MOTOR APPROX. WEIGHT: 4770 lb
- ⓑ FOR BEARING RTD, END BRACKETS SHALL BE PRE-DRILLED AND PLUGGED.
 Ⓒ FOR AUXILIARY, FRAME SHALL BE PRE-DRILLED AND COVERD WITH STEEL PLATE.

SHAFT END
(ENLARGED VIEW)

DATE 070722	OUTLINE DIMENSIONS	
KPF4002	3-PHASE INDUCTION MOTOR	
DWN. L. JHENG APR. 29. 2019	DWG NO.	REV: 01
CHKD. H. WANG APR. 30. 2019	5A040C210	
APPD. C. WANG APR. 30. 2019	TEC Westinghouse	