

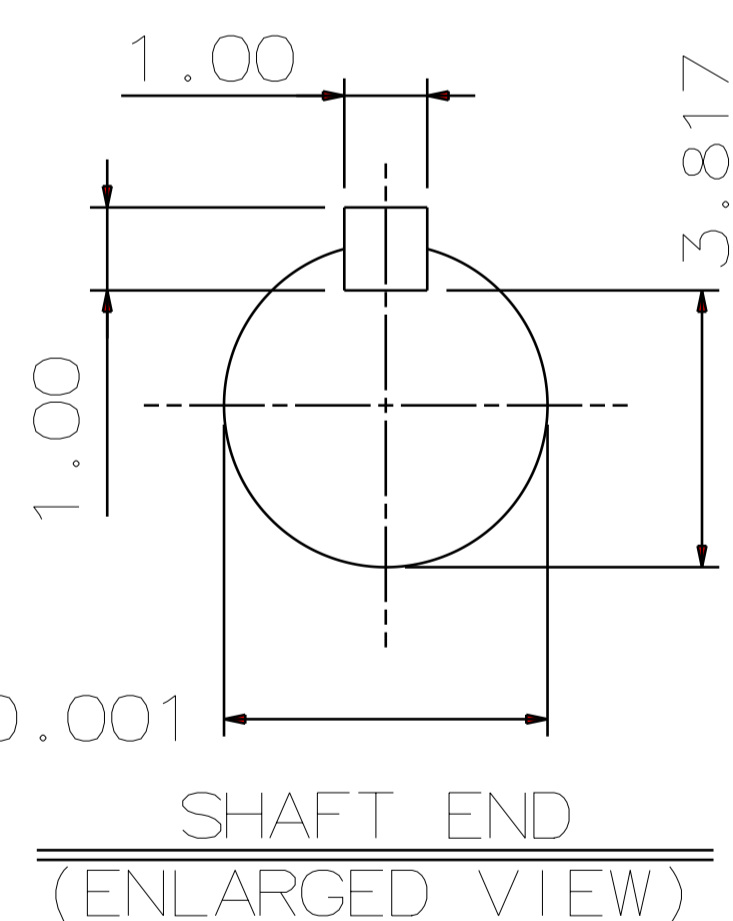
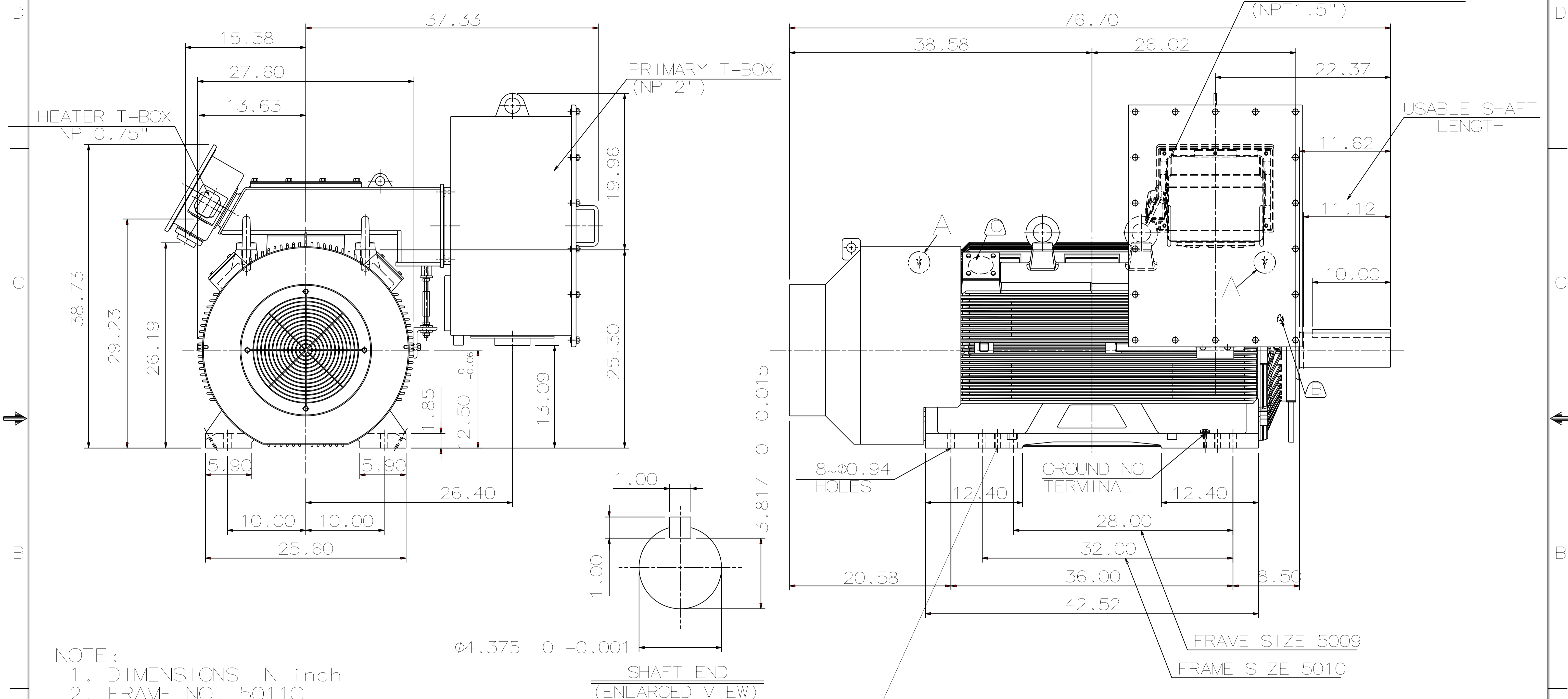


DETAIL A

PROVISION FOR VIBRATION DETECTORS

TYPE	OUTPUT		POLE	TIME RATING	VOLTAGE V	Hz	SYN. SPEED R.P.M
	HP.	kW.					
AFHP	400	298	4	CONT.	2300/4000	60	1800

TOTALLY ENCLOSED FAN-COOLED, TYPE. SQUIRREL-CAGE ROTOR



4X-M20 JACKING PROVISIONS

- NOTE:
1. DIMENSIONS IN inch
 2. FRAME NO. 5011C
 3. F CLASS INSULATION
 4. FOR DIRECT FLEXIBLE COUPLING
 5. ENCLOSURE: IP55
 6. BEARING SIZE: DRIVE-END NU324C3
OPP. DRIVE-END 6320C3
 7. WITH SPACE HEATER & WINDING RTD
 8. MOTOR APPROX. WEIGHT: 4710 lb

- ⓑ FOR BEARING RTD, END BRACKETS SHALL BE PRE-DRILLED AND PLUGGED.
- Ⓒ FOR AUXILIARY, FRAME SHALL BE PRE-DRILLED AND COVERD WITH STEEL PLATE.

DATE 070707			OUTLINE DIMENSIONS	
kPF4004R			3-PHASE INDUCTION MOTOR	
DWN.	L. JHENG	APR. 29. 2019	DWG NO.	REV: 01
CHKD.	H. WANG	APR. 30. 2019	5A040C217	
APPD.	C. WANG	APR. 30. 2019	TEC Westinghouse	