

6

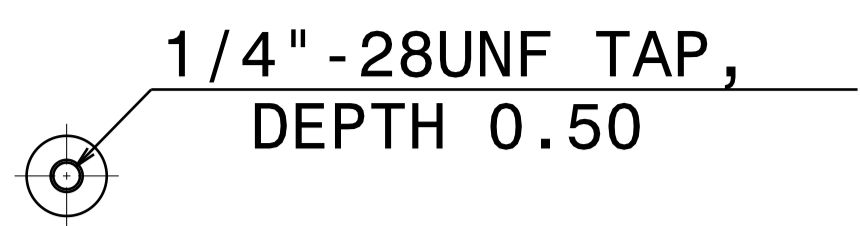
5

4

3

2

1

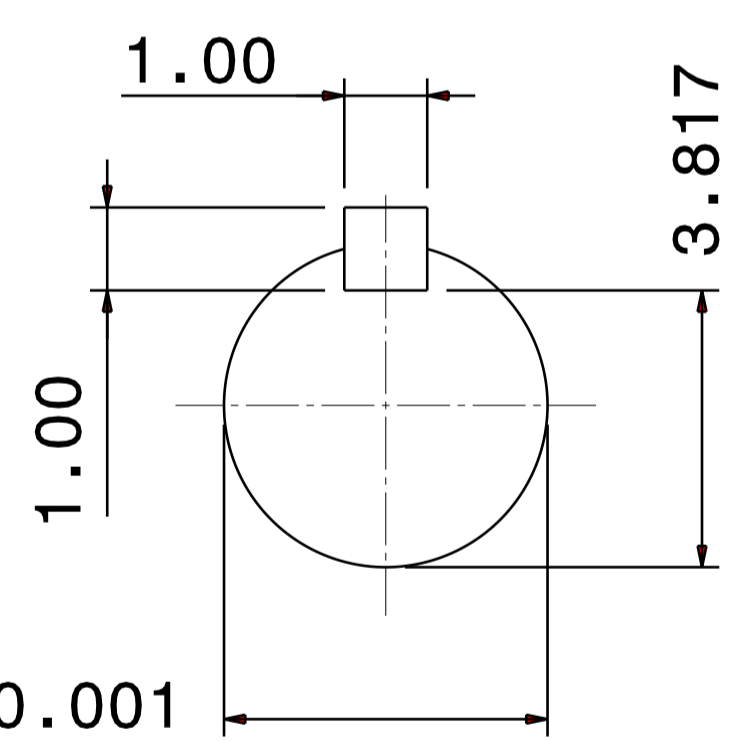
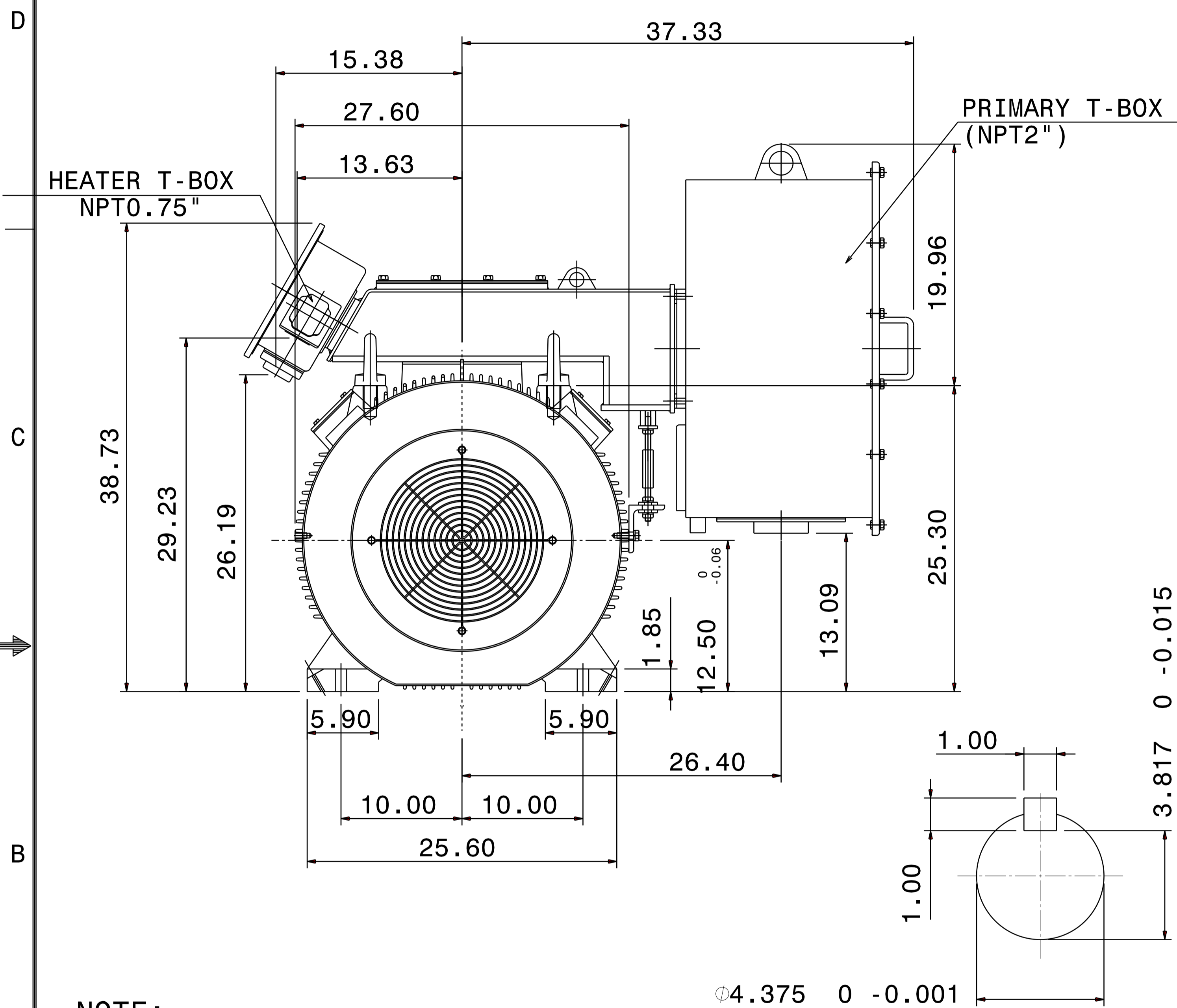


DETAIL A

PROVISION FOR VIBRATION DETECTORS

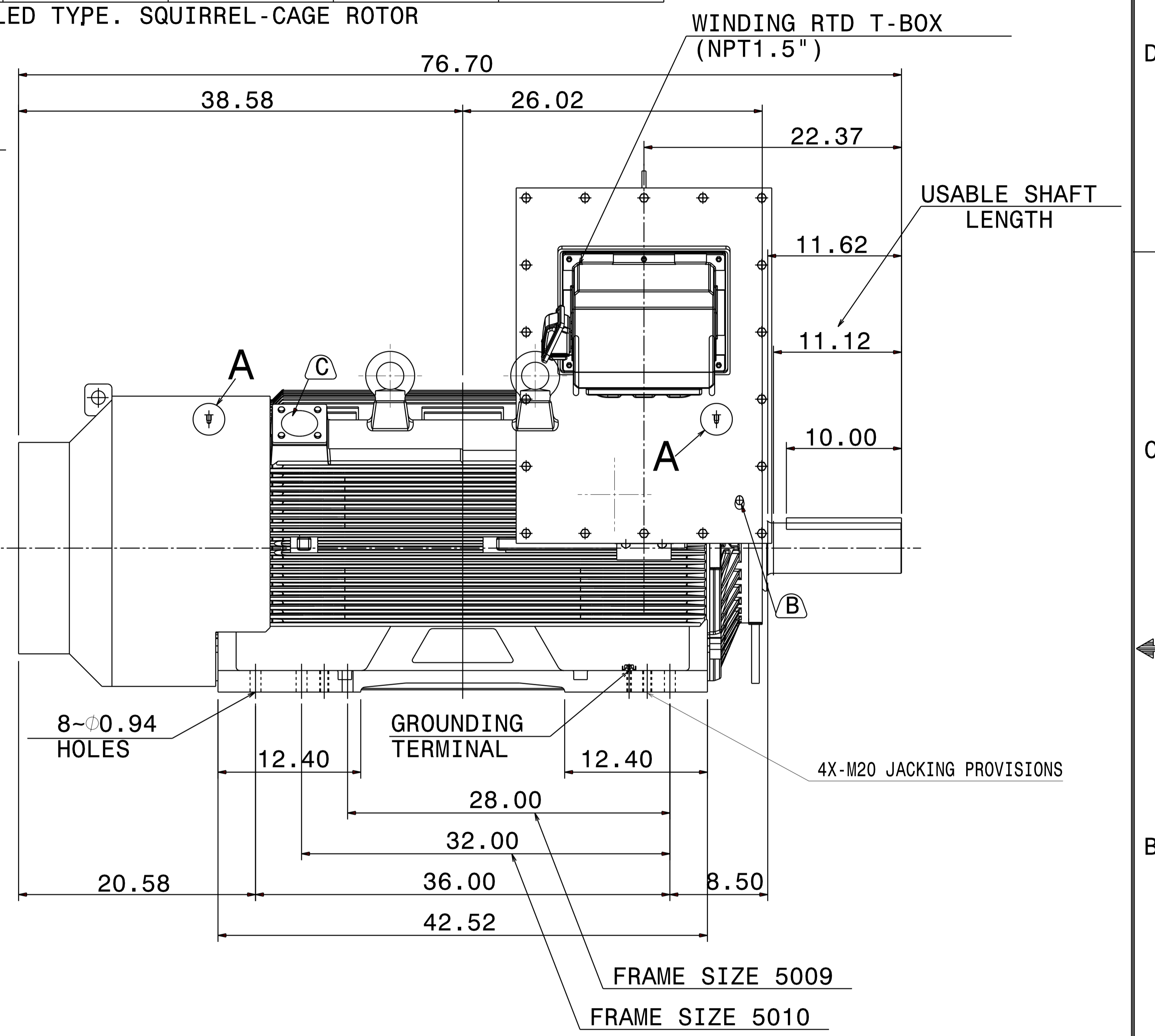
TYPE	OUTPUT		POLE	TIME RATING	VOLTAGE V	Hz	SYN.SPEED R.P.M
	HP.	kW.					
AFHP	450	336	6	CONT.	2300/4000	60	1200

TOTALLY ENCLOSED FAN-COOLED TYPE. SQUIRREL-CAGE ROTOR



Ø4.375 0 -0.001

SHAFT END (ENLARGED VIEW)



- NOTE:
1. DIMENSIONS IN inch
  2. FRAME NO. 5011C
  3. F CLASS INSULATION
  4. FOR DIRECT FLEXIBLE COUPLING
  5. ENCLOSURE: IP55
  6. BEARING SIZE: DRIVE-END NU324C3  
OPP. DRIVE-END 6320C3
  7. WITH SAPCE HEATER & WINDING RTD
  8. MOTOR APPROX. WEIGHT: 5050 lb
- ⓑ FOR BEARING RTD, END BRACKETS SHALL BE PRE-DRILLED AND PLUGGED.
- ⓒ FOR AUXILIARY, FRAME SHALL BE PRE-DRILLED AND COVERD WITH STEEL PLATE.

DATE			OUTLINE DIMENSIONS	
KPF4506R			3-PHASE INDUCTION MOTOR	
DWN.	L. JHENG	APR.29 2019	DWG NO.	REV: 02
CHKD.	H. WANG	APR.30 2019	5A040C218	
APPD.	C. WANG	APR.30 2019	TEC Westinghouse	

6

5

4

3

2

1

1/4