

6

5

4

3

2

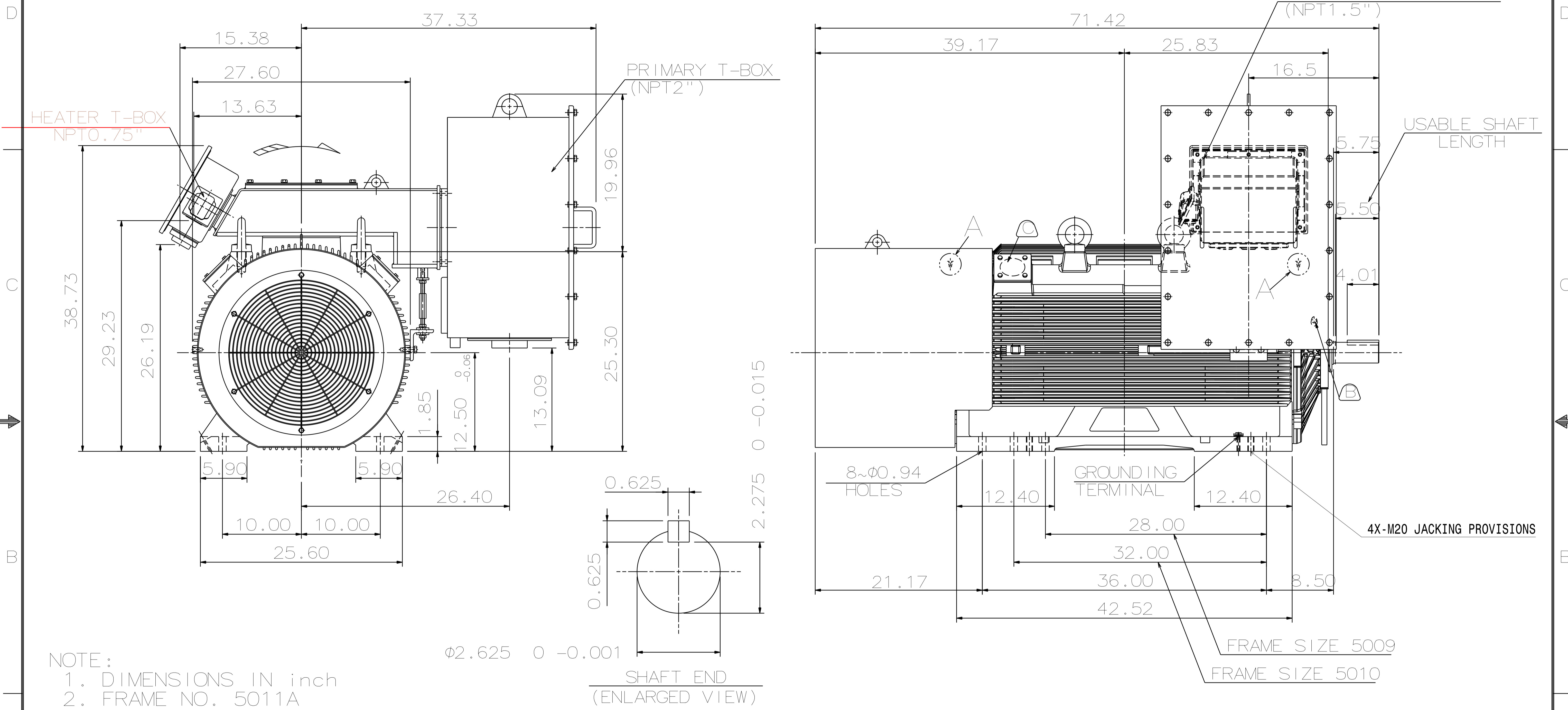
1

1/4"-28UNF TAP,
DEPTH 0.50
DETAIL A

TYPE	OUTPUT		POLE	TIME RATING	VOLTAGE V	Hz	SYN. SPEED R.P.M
	HP.	kW.					
AFHP	500	373	2	CONT.	2300/4000	60	3600

PROVISION FOR VIBRATION DETECTORS

TOTALLY ENCLOSED FAN-COOLED, TYPE. SQUIRREL-CAGE ROTOR



- NOTE:
1. DIMENSIONS IN inch
 2. FRAME NO. 5011A
 3. F CLASS INSULATION
 4. FOR DIRECT FLEXIBLE COUPLING
 5. ENCLOSURE: IP55
 6. BEARING SIZE: DRIVE-END 6315C3
OPP. DRIVE-END 6315/C3VL0241
 7. WITH SPACE HEATER & WINDING RTD
 8. MOTOR APPROX. WEIGHT: 4770 lb

ⓑ FOR BEARING RTD, END BRACKETS SHALL BE PRE-DRILLED AND PLUGGED.
 Ⓒ FOR AUXILIARY, FRAME SHALL BE PRE-DRILLED AND COVERD WITH STEEL PLATE.

DATE	070722	OUTLINE DIMENSIONS	
	KPF5002	3-PHASE INDUCTION MOTOR	
DWN.	L. JHENG	APR. 29. 2019	
CHKD.	H. WANG	APR. 30. 2019	
APPD.	C. WANG	APR. 30. 2019	
TEC Westinghouse		DWG NO.	REV: 01
		5A040C210 1/4	

6

5

4

3

2

1