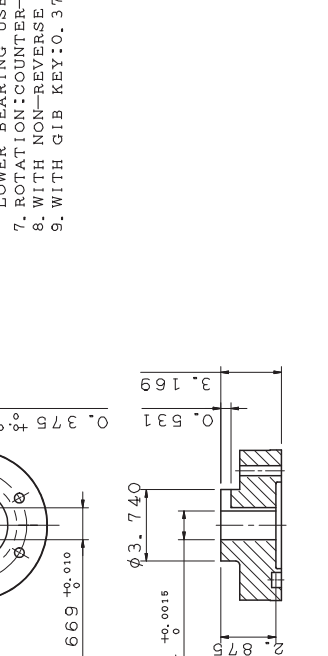


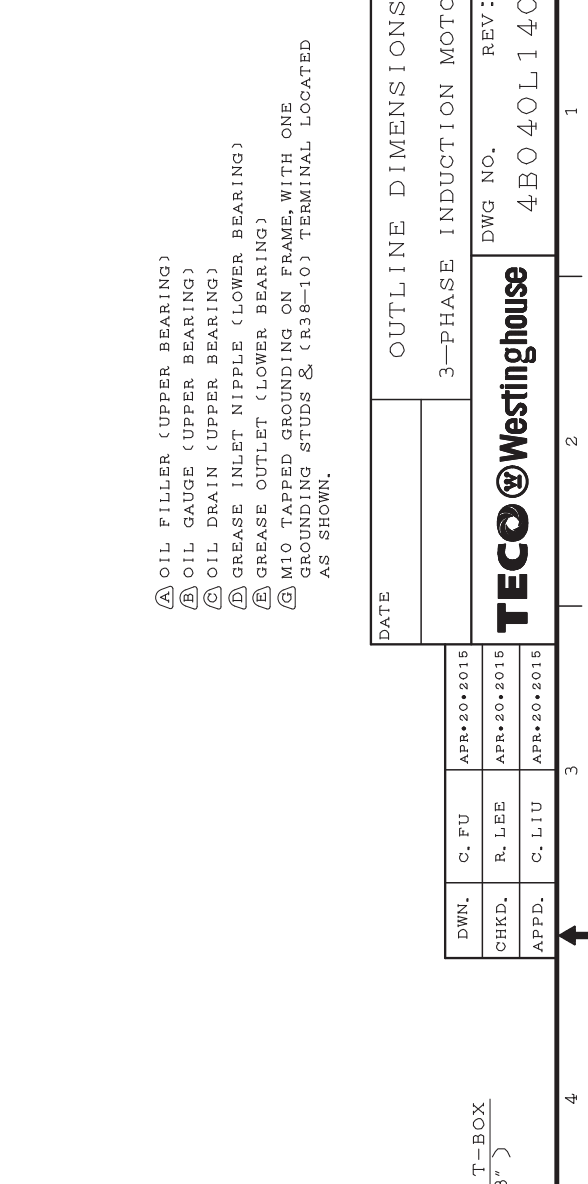
TYPE	OUTPUT		POLE	TIME RATING	VOLTAGE V	Hz	SYN. SPEED R. P. M
	HP.	kW.					
AMRC-NH			6	CONT		60	1200

ENCLOSED VENTILATED VERTICAL HOLLOW SHAFT TYPE, SQUIRREL CAGE ROTOR
NEMA WEATHER PROTECTED TYPE I

- NOTE:
1. DIMENSIONS IN INCH
 2. FRAME NO. 444TP
 3. F CLASS INSULATION, S. F. 1. 15
 4. FOR DIRECT COUPLING.
 5. BEARING SIZE:
UPPER BEARING: 7324B (UNINSULATED)
LOWER BEARING: 6316C3 (UNINSULATED)
 6. LUBRICATION:
UPPER BEARING USE OIL.
OIL VISCOSITY: ISO VG68(300 SSU/100° F)
OIL QUANTITY: 2.6 GAL.
LOWER BEARING USE MOBIL POLYREX EM GREASE.
 7. ROTATION: COUNTER-CLOCKWISE (VIEWED FROM TOP).
 8. WITH NON-REVERSE RATCHET MECHANISM.
 9. WITH GIB KEY: 0.375x0.375x2.874, 1PCS



COUPLING
(ENLARGED VIEW)



- (A) OIL FILLER (UPPER BEARING)
- (B) OIL GAUGE (UPPER BEARING)
- (C) OIL DRAIN (UPPER BEARING)
- (D) GREASE INLET NIPPLE (LOWER BEARING)
- (E) GREASE OUTLET (LOWER BEARING)
- (G) M10 TAPPED GROUNDING ON FRAME, WITH ONE GROUNDING STUDS & (R38-10) TERMINAL LOCATED AS SHOWN.

DATE	OUTLINE DIMENSIONS		
	3-PHASE INDUCTION MOTOR		
DWN. C. FU	APR*20*2015	DWG NO.	REV:00
CHKD. R. LEE	APR*20*2015		
APPD. C. LIU	APR*20*2015		
TECO Westinghouse		4BO40L140	