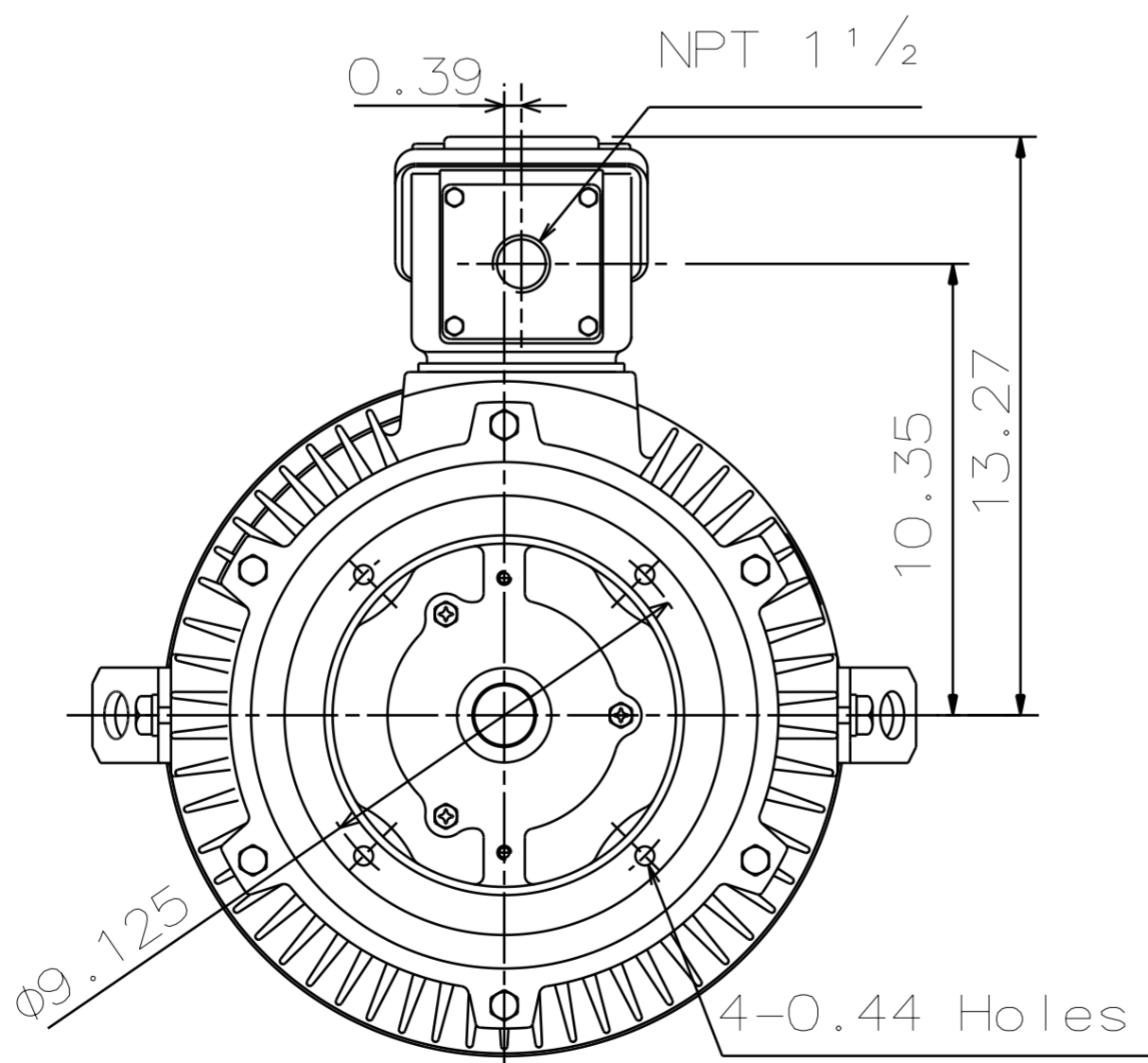
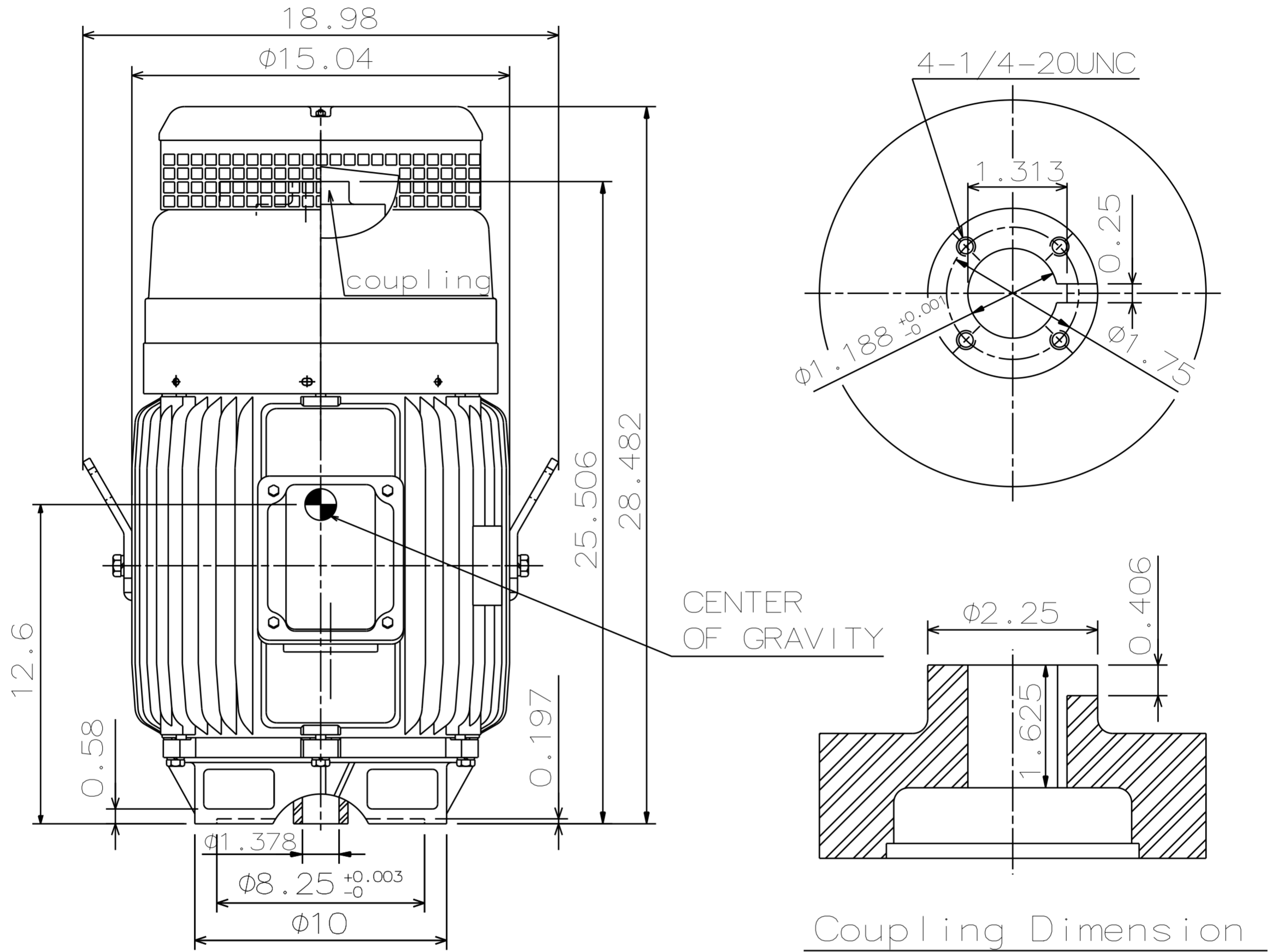


CATALOG NUMBER: VHTP0304	OUTLINE DIMENSIONS 3-PHASE INDUCTION MOTOR	MOTOR TYPE: AEEHNH
DATE OCT-03-2017		FRAME NO. 286TP

Pole	HP	kW	Hz	VOLT	r/min (rpm)
4	30	22.5	60	230/460	1800

Ins	Rating	Dimension in	Approx Weight	Bearings
F	CONT.	inches	558 LBS	DE: 6311ZZC3 NDE: 7312BE

Totally Enclosed Fan-Cooled Vertical Type. Squirrel-cage Rotor.



Note:

1. IP44 Protection.
2. Rotation: C.C.W. (View from Top)
3. With Ball Type N.R.R.
4. Down Thrust: 3350 lbs. (L10: 8800 hours)
5. Space Heater Rated At 120 volts. Leads Terminate In The Main Lead Box.
6. Reed Critical Frequency: 67.0 Hz.

TA17129-00-00

--	--	--

DWG.	04.20.17	TEC Westinghouse	DWG NO.
CHKD.	04.28.17		31057A478300
APPD.	04.28.17		