

ISSUED 2-Sep-15	OUTLINE DIMENSION SHEET	MODEL AEHHGD
REVISED 20-Feb-17		3-PHASE INDUCTION MOTOR FRAME SIZE 444 ~ 449T

Totally Enclosed Fan - Cooled Type, Squirrel - Cage Rotor

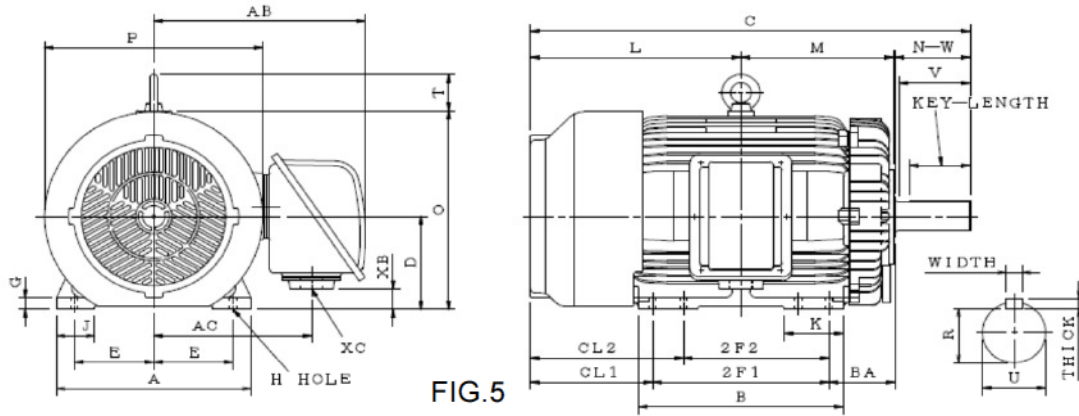


FIG.5

Dimension in inches

Output (HP)			FRAME SIZE	FIG. NO.	Mounting					A	B	C	CL1	CL2	D	G	J	K
4P	6P	8P			E	2F1	2F2	H	BA									
125	100	75	444T	5	9.00	14.50	-	0.81	7.50	22.05	17.50	44.50	13.50	-	11.00	1.40	4.35	4.35
150	125	100	445T		9.00	16.50	14.50	0.81	7.50	22.05	17.50	46.00	13.50	15.50	11.00	1.40	4.35	5.10
200	150	125	447T		9.00	20.00	16.50	0.81	7.50	22.05	23.25	49.50	13.50	17.00	11.00	1.40	4.35	6.70
200	150	125	447TZ		9.00	20.00	16.50	0.81	7.50	22.05	23.25	49.50	13.50	17.00	11.00	1.40	4.35	6.70
250	200	150	449T		9.00	25.00	20.00	0.81	7.50	22.05	27.95	54.50	13.50	18.50	11.00	1.40	4.35	8.25
300	250	200			9.00	25.00	20.00	0.81	7.50	22.05	27.95	54.50	13.50	18.50	11.00	1.40	4.35	8.25
250	200	150	449TZ		9.00	25.00	20.00	0.81	7.50	22.05	27.95	54.50	13.50	18.50	11.00	1.40	4.35	8.25
300	250	200			9.00	25.00	20.00	0.81	7.50	22.05	27.95	54.50	13.50	18.50	11.00	1.40	4.35	8.25

FRAME SIZE	L	M	O	P	T	Key			Keyseat R	Shaft Extension			Terminal Housing				Bearings	
						WIDTH	THICK	LENGTH		N-W	U	V	AB	AC	XB	XC	DRIVE END	OPPOSITE DRIVE END
444T	20.75	14.40	23.55	24.75	4.35	0.875	0.875	6.91	2.880	8.50	3.375	8.00	24.00	17.90	2.40	NPT3	6318	6316
445T	21.75	15.40	23.55	24.75	4.35	0.875	0.875	6.91	2.880	8.50	3.375	8.00	24.00	17.90	2.40	NPT3	6318	6316
447T	23.50	17.15	23.55	24.75	4.35	0.875	0.875	6.91	2.880	8.50	3.375	8.00	24.00	17.90	2.40	2-NPT3	6320	6316
447TZ	23.50	17.15	23.55	24.75	4.35	0.875	0.875	8.50	2.880	10.12	3.375	9.67	24.00	17.90	2.40	2-NPT3	NU320	6316
449T	26.00	19.65	23.55	24.75	4.35	0.875	0.875	6.91	2.880	8.50	3.375	8.00	24.00	17.90	2.40	2-NPT3	6320	6316
449TZ	26.00	19.65	23.55	24.75	4.35	0.875	0.875	8.50	2.880	10.12	3.375	9.67	24.00	17.90	2.40	2-NPT3	NU320	6316

- Note :
1. Dimension D tolerance : +0.00 inches, -0.06 inch.
 2. Dimension U tolerance : +0.000 inches, -0.001 inches.
 3. Dimension R tolerance : +0.000 inches, -0.015 inches.
 4. Dimension V is the length of straight part of shaft.

APPD.	Liau-Shin Hung	21-Feb-17	TECO Electric & Machinery Co., Ltd.	DWG NO.
CHKD.	Hspeter	21-Feb-17		31049M35691
DWN.	Lynn Tsai	20-Feb-17		REV. 02

ISSUED 1-Apr-16	PERFORMANCE DATA 3-PHASE SQUIRREL CAGE HIGH EFFICIENCY INDUCTION MOTORS	MODEL AEHHGD
REVISED 13-Feb-17		



ee C C 0 0 2 A

TEFC, NEMA T-FRAME, DESIGN - C,
CLASS F, 40°C AMBIENT, CONTINUOUS DUTY,
S.F. 1.15 460V 60Hz

TYPICAL PERFORMANCE

(460 V)

OUTPUT		POLE	FULL LOAD RPM	FRAME SIZE	EFFICIENCY(%)				POWER FACTOR(%)			CURRENT			TORQUE				ROTOR WK ² lb-ft ²	NEMA CODE LETTER
					FULL LOAD		3/4 LOAD	1/2 LOAD	FULL LOAD	3/4 LOAD	1/2 LOAD	FULL LOAD	208V USABLE	LOCKED ROTOR	FULL LOAD	LOCKED ROTOR	PULL UP	BREAK DOWN		
					NOM.	MIN.	NOM.	NOM.				(A)	ON-A	(A)	lb-ft	%FLT	%FLT	%FLT		
60	45	4	1775	364T	95.0	94.1	95.0	94.5	86.5	83.0	75.5	68	151	435	177.5	200	155	240	12.23	G
		6	1180	404T	94.5	93.6	94.5	94.1	87.0	86.5	80.5	68	151	435	267.0	220	185	250	33.54	G
		8	885	405T	93.0	91.7	93.6	93.6	81.0	78.0	68.0	75	165	435	356.0	200	180	230	32.55	G
75	55	4	1775	365T	95.4	94.5	95.4	95.0	86.5	83.5	75.5	85	188	543	221.9	200	165	250	14.67	G
		6	1180	405T	94.5	93.6	94.5	94.5	86.5	84.5	79.0	86	190	543	333.7	200	175	225	37.86	G
		8	890	444T	93.6	92.4	93.0	93.0	73.0	68.0	57.0	103	227	543	442.5	210	180	210	55.10	G
100	75	4	1775	405T	95.4	94.5	95.4	95.0	87.5	85.5	80.0	112	248	725	295.8	215	140	215	26.64	G
		6	1181	444T	95.0	94.1	94.5	93.6	82.5	80.0	73.0	119	264	725	444.6	200	150	240	56.00	G
		8	890	445T	93.6	92.4	93.0	93.0	78.0	74.0	65.0	128	284	725	589.9	230	180	250	72.80	G
125	90	4	1780	444T	95.4	94.5	95.0	94.1	85.0	83.0	77.0	144	319	908	368.7	200	140	220	44.30	G
		6	1182	445T	95.0	94.1	94.5	93.6	83.0	80.5	74.0	148	328	908	555.3	200	140	230	68.00	G
		8	890	447T	94.1	93.0	94.1	94.1	80.0	77.0	69.0	155	344	908	737.4	220	160	260	141.0	G
150	110	4	1783	445T	95.8	95.0	95.4	94.5	85.0	83.0	78.0	172	--	1085	441.7	210	160	270	52.00	G
		6	1185	447T	95.8	95.0	95.4	94.5	83.5	81.0	74.0	176	--	1085	664.6	200	160	220	103.0	G
		8	890	449T	94.1	93.0	94.1	94.1	80.0	77.0	69.0	187	--	1085	884.9	220	160	250	166.0	G
200	150	4	1785	447T	95.4	94.5	95.8	95.0	87.0	83.5	78.5	226	--	1450	588.3	200	140	210	73.50	G
		6	1186	449T	95.8	95.0	95.4	94.5	84.0	81.0	74.0	233	--	1450	885.4	200	140	210	125.0	G
		8	890	449T	94.5	93.6	94.1	94.1	82.5	77.0	69.0	240	--	1450	1180	200	160	230	221.0	G

- NOTE :
1. The above are typical values based on test according to ANSI/IEEE standard 112 method B.
 2. Breakdown & locked rotor torques are shown as average expected values.
 3. Efficiency, power factor, speed and torque are the same for other voltages.
Current values vary inversely with voltage.
 4. Tolerance according to NEMA MG1-12 & IEC 60034-1.
 5. Data subject to change without notice.

APPD.	Liau-Shin Hung	21-Feb-17	TECO Electric & Machinery Co., Ltd.	DWG. NO.	31057D62114
CHKD.	Ho-Miuy Te	22-Feb-17		REV. 04	
DWN.	Davis Ting	13-Feb-17		2/6	

ISSUED 1-Apr-16	PERFORMANCE DATA 3-PHASE SQUIRREL CAGE HIGH EFFICIENCY INDUCTION MOTORS	MODEL AEHHGD
REVISED 30-Nov-16		

TEFC, NEMA T-FRAME,
CLASS F, 40°C AMBIENT, CONTINUOUS DUTY,
60HZ 230/460V WINDING USED AT 50HZ 190/380V, S.F. 1.0

TYPICAL PERFORMANCE (380 V)

OUTPUT HP	KW	POLE	FULL LOAD RPM	FRAME SIZE	EFFICIENCY(%)				POWER FACTOR(%)			CURRENT		TORQUE				ROTOR WK ² lb-ft ²	NEMA CODE LETTER
					FULL LOAD		3/4 LOAD	1/2 LOAD	FULL LOAD	3/4 LOAD	1/2 LOAD	FULL LOAD	LOCKED ROTOR	FULL LOAD	LOCKED ROTOR	PULL UP	BREAK DOWN		
					NOM.	MIN.	NOM.	NOM.				(A)	(A)	lb-ft	%FLT	%FLT	%FLT		
60	45	4	1470	364T	94.1	93.0	95.0	95.0	88.5	87.5	82.0	82	578	214.3	155	130	215	12.23	H
		6	975	404T	93.0	91.7	94.5	95.4	88.5	89.0	86.5	83	578	323.1	135	130	200	33.54	H
		8	730	405T	92.5	91.1	93.0	92.5	78.0	73.5	64.0	94	578	431.5	180	160	200	32.55	H
75	55	4	1470	365T	94.5	93.6	95.0	95.4	89.0	88.0	83.5	101	722	267.9	150	125	205	14.67	H
		6	975	405T	93.6	92.4	94.5	95.4	88.5	89.0	86.5	103	722	403.9	140	130	200	37.86	H
		8	730	444T	92.0	90.6	93.0	93.5	81.0	78.5	71.5	114	722	539.4	170	150	200	55.10	H
100	75	4	1475	405T	94.5	93.6	95.4	95.8	88.5	89.0	87.0	136	965	356.0	185	135	205	26.64	H
		6	979	444T	93.6	92.5	93.6	92.4	82.5	80.0	73.0	147	965	536.3	110	100	180	56.00	H
		8	735	445T	93.5	92.3	93.5	93.5	78.0	73.0	63.0	155	965	714.4	230	190	270	72.80	H
125	90	4	1477	444T	94.5	93.6	94.1	93.0	84.0	82.0	77.0	178	1207	444.4	105	95	175	44.30	H
		6	980	445T	94.1	93.0	93.6	92.4	83.0	80.5	74.0	181	1207	669.7	110	100	175	68.00	H
		8	735	447T	94.1	93.0	94.5	94.0	78.5	74.5	64.5	192	1207	892.9	240	210	260	141.0	H
150	110	4	1478	445T	95.0	94.1	94.5	93.6	84.0	82.0	77.0	213	1441	532.9	95	85	170	52.00	H
		6	981	447T	95.0	94.1	94.5	93.6	83.5	81.0	74.0	214	1441	802.8	110	100	170	103.0	H
		8	735	449T	93.5	92.3	94.0	94.0	81.0	78.0	69.5	224	1441	1072	220	200	240	166.0	H
200	150	4	1480	447T	95.4	94.5	95.4	94.1	84.5	82.5	78.5	281	1927	709.5	90	80	170	73.50	H
		6	980	449T	93.5	92.3	94.7	95.4	87.0	86.5	82.0	279	1927	1072	180	160	200	125.0	H
		8	730	449T	93.0	91.7	94.5	95.0	83.5	82.5	77.5	292	1927	1438	160	140	180	221.0	H

- NOTE :
- The above are typical values based on test according to ANSI/IEEE standard 112 method B.
 - Breakdown & locked rotor torques are shown as average expected values.
 - Efficiency, power factor, speed and torque are the same for other voltages.
Current values vary inversely with voltage.
 - Tolerance according to NEMA MG1-12 & IEC 60034-1.
 - Data subject to change without notice.

APPD.	Liau-Shin Hung	21-Feb-17	TECO Electric & Machinery Co., Ltd.	DWG. NO.	31057D62114
CHKD.	Ho-Miuy Te	22-Feb-17		REV. 04	
DWN.	Robo.Huang	2-Dec-16			